

THE JINDERA NEWS

FREE - local Newspaper distributed by the first Saturday of each month (except January) published by:-



Rural CareLink - a Jindera based not-for-profit local Charity Organisation.

Bargain Hunters Converge on Jindera

A perfect autumn day welcomed hundreds of eager bargain hunters to Jindera for the 27th **Jindera GARAGE SALE**. Over 55 sites registered to be part of the fun and sheds and garages were emptied of all those special unwanted pieces. Unfortunately, there were still some residents who took advantage of the garage sale happening without actually registering their site. *All the money raised goes to support people in the community.* People from a wide area including Melbourne made the most of the opportunity to snap up a bargain. There are many longer distance travellers who return year after year. Due to the ebb and flow of people through a myriad of locations it is always hard to accurately count numbers.

Visitors supported the Op Shop along with all the food outlets. Thank you to the Jindera Bakery, Fox and Brew, the Jindera Hotel and of course the Jindera Anglers Club with their annual offering of tasty fare, for providing a great variety of food.

Jindera Rural CareLink continues to support and organize this annual event by providing the registration of sites, advertising and producing the maps, placing corflute signs at the entrances to the town.

It will continue to be an annual event because it:

- ★ Supports people to declutter unused belongings
- ★ A means to recycle, reuse and repurpose items
- ★ It gets people out and about in their own community encouraging social connections
- ★ Showcases our lovely town of Jindera

Congratulations to the Council Parks and Gardens team who had the town looking immaculate. Any suggestions to add to next year's event would be welcomed.

Feedback can be sent to office@ruralcarelink.org.au

A big thank you to our faithful sponsors (see sponsors page 11) of the 2026 Garage Sale.

More Garage Sale page 11





Headlines and Happenings

By Lizzie Pogson. (Secretary, RCL).

1. Rural Care Link AGM 2026:

The AGM was held on Sunday 12th April, when detailed accounts and overall summary reports were read, covering each of our Core Business areas. These were also supplied to each of our Members, prior to the AGM, to share the same information and also to ensure that people’s inability to attend on the day did not exclude them from the knowledge provided. We see that transparency as a vital part of our communication and pride ourselves on our openness in our operations, whilst keeping the balance that safeguards people’s confidentiality.

We thanked Betty Chaloner for once again acting as our Returning Officer and conducting the election of the new Office Bearers and general Committee.

It was particularly rewarding to have a variety of comments made, acknowledging from within the Committee, the level of dedication that is bringing such professionalism to the organisation, also from 2 attendees, their heartfelt appreciation and recognition of just how much help Rural Care Link has been, changing their lives and that of their families.

2. Farewell and Thank You:

Thank you!

The Committee wish to publicly farewell two members who have served for several years, who have been terrific contributors to Rural Care Link.

Dave Cochrane’s expertise in compliance-related matters along with his tenacity to follow up on issues has been invaluable in ensuring that we have sought the correct advice through reputed sources, with our overall strategic planning in mind. We are very pleased that he is making himself available should we need his specialised area of expertise, into the future.

Michelle Ingram has brought her caring nature and previous (and ongoing) volunteering roles to the table and has collaborated to get our Community Assist Volunteer Programme up and running and further advanced. We are grateful that Michelle will continue to be active on this team visiting and caring for people in our community.

For general **RCL** (Rural Care Link) **Enquiries** including Volunteering, Hardship, Personal Assistance and **Community Assist**.
Please call the RCL Office
0475 594 073

3. Welcome on board:

At the April AGM, we welcomed aboard three new voluntary Committee



Members – **Stephanie Klein, Greg Rowe and Vern White**. We thank them all for putting themselves forward to join us, bringing fresh perspectives and a variety of experience to add to the mix. Over the next 3 editions, we will introduce you to these willing people, as they take on their new roles.

4. Seeking Saturday Morning and School Holiday Student Volunteers:

Rural Care Link is reliant on the income raised through our Op Shop to support all the programmes we run and without which, we could not operate as such. We are keen to encourage any High School Students in our area, to consider helping out either on a Saturday morning or during School Holidays. Any additional support and some younger input would be so welcomed.



5. Date for the next Op Shop Meeting:

10am Meeting on 15th June 2026

This meeting will include a Fire Drill, Privacy Training, information around and implementation of our updated Incident Report, and any Op Shop concerns that Volunteers may have and wish to raise. Lunch will be provided by RCL.



6. Volunteers Week - May 18-24, 2026:

We look forward to celebrating this week - in an organisation made up entirely of Volunteers, bar our Office Administration Assistant.

This week is a time to stop and reflect on the variety of contributions that we ALL bring to RCL and to our community at large (*more Volunteer Week - pages 4 & 5*).

INTRODUCING
Rural Care Link Committee 2026

President: Leeny Mason
Vice President: Jenny O'Neill
Secretary: Lizzie Pogson
Treasurer: Michelle Grenness

Coordinators
Op Shop: Jason McKenzie
Community Assist: Judy Wright
Carers Group: Vickie Priscina
Jindera News: Jenny O'Neill

Ordinary Members
Stephanie Klein
Greg Rowe
Vern White



Run by volunteers

Op Shop ONLY enquiries
(02) 6026 3001

This is the dedicated Op Shop number and therefore, if you need assistance outside of trading hours, please use the RCL office number 0475 594073.

Op Shop Trading Hours:

Tues - Fri 10am to 4pm (closed for lunch 1pm to 1.45pm)

Saturdays - 10am to 1pm

83 Urana Street, Jindera NSW

[Op Shop Facebook](#) - please click on this link

Jindera News Contributions

Please Note: The editorial team reserves the right not to publish submissions or to modify the presentation of any item to suit the style of the publication. All items published are understood to be the responsibility of the contributor.

Advertising Rates - 2026

Per Edition: Full page \$120.00
1/2 page \$75.00
1/3 page \$60.00
1/4 page \$50.00
1/8 page \$35.00 (Bus. Card size)

Discounts Apply for consecutive advertisements

Also available: Colour advertising ♦ Single page inserts
FREE digital colour editions of this publication are available by email subscription.

For more information or to request digital editions

Email us at jinderanews@ruralcarelink.org.au

DEFIBRILLATOR'S in Jindera

TWO Defibrillators are available **24 Hours a Day**

- ★ **Jindera Hub Building**
- ★ **Jindera Country Golf Club** easy to access from carpark

Other Defibrillators are available during the following Jindera Facilities **Open Hours**

- ★ Jindera Pre-School
- ★ Football Club
- ★ Swimming Pool
- ★ Tennis Club
- ★ Fire Brigade
- ★ Anglers' Club
- ★ Jindera Medical Centre
- ★ Jindera Public School
- ★ St. Johns School



In case of EMERGENCIES please familiarise yourself with these above locations.

Jindera Waste Facilities
OPENING TIMES

- ♦ **Wednesday** 2pm - 5pm
- ♦ **Saturday** 9am - 12pm
- ♦ **Sunday** 2pm - 5pm

Council **does not accept** hazardous wastes, chemical drums (except as arranged on drum muster days) or animal carcasses.

Charges apply for some waste items

The Jindera waste facility is located at
148 Dights Forest Road

For further info go to
<file:///C:/Users/julia/Downloads/Waste-Facilities-Opening-Times-Charges-and-Accepted-Waste->



Carers Support Group

We *usually* meet monthly on the
3rd Tuesday of each month

Please call **Vickie - 0428 406060**
for **venue** and **dates** of these meetings.

Peer support, respite & information sharing is the focus of the Carer Group.

For more information call
Vickie Priscina - Carer Group Co-Ordinator
on **0428 406 060**



As Jindera continues to grow and thrive with new residents, there are many community groups and organisations looking for more members to become volunteers. Volunteering helps build new skills, improves mental and physical wellbeing, and enables new friendships and neighbourhood contact.

Here’s your guide to our local community organisations and how you can get in involved!

Rural CareLink

Find out what Rural Care Link are up to on pages 2, and 3 of this edition and
 we are currently looking for more volunteers to help us in our **Op Shop**, open 5 days a week! See Op Shop advert on page 5.



Information & contact: - Ph: 0475 594 073 - Email: office@ruralcarelink.org.au - Web: www.ruralcarelink.org.au

Jindera Museum

The Jindera Pioneer Museum were winners of the **2025 Outstanding Community Organisation**, the Jindera Pioneer Museum will be holding a number of events this year. Find out more on pages 10.



Information & contact - [facebook](https://www.facebook.com/jinderamuseum) - Ph: 0408 409842 - www.jinderamuseum.com.au

Jindera Fire Brigade

The NSW RFS is the **world’s largest Volunteer Fire Service** made up of more than 70,000 dedicated volunteers across NSW.

You can volunteer with our local brigade! Our local fire brigade not only protect us in the event of fire but also emergencies and also supports all our local fundraisers. For more Fire Brigade news see page 14.

Information & contact:- [facebook](https://www.facebook.com/rfsnsw) - Ph: 0427263414- www.rfs.nsw.gov.au



Jindera Community Gardens

Nestled at the back of Pioneer Park the Jindera Community Gardens are always on the look out for new ideas. Find them on Facebook and read more on page 32.



OUR LOCAL SCHOOLS

St Mary McKillop College, St John Lutheran School and Jindera Public School are always looking for helping hands to support their students!



Jindera Public School are actively seeking volunteers to support their P and C, school canteen, uniform shop. Volunteers are sought to help with the May 9 Election Day with a BBQ and/or cake stall fundraiser. Later in the year Jindera Public will be burying a time capsule – contributions and volunteers are all welcome!



St John’s Lutheran School Information & contact:- [facebook](https://www.facebook.com/stjlsnsw) - Ph: 02 6026 3220 - www.stjls.nsw.edu.au

Jindera Public School Information & contact: [facebook](https://www.facebook.com/jindera-p.schools) - Ph: 02 6026 3280 - www.jindera-p.schools.nsw.gov.au

Saint Mary McKillop College Information & contact:- [facebook](https://www.facebook.com/smmcnsw) - Ph: 02 6045 9422 www.smmc.nsw.edu.au



OUR LOCAL SPORTING CLUBS

Jindera Football & Netball Club (JFNC) – the JFNC are on the hunt for umpires! Find out what the club is up to on pages 34,35,36.

Jindera Auskick and Jindera Net Set Go – these fantastic programs for our young kids need your support in leading drills and manning the BBQ. More on Facebook - [Netball](https://www.facebook.com/jinderanetballclub) - www.facebook.com/jinderanetballclub
 Football - www.facebook.com/JinderaFootballClub



Jindera Tennis Club – The club is open for social and competitive tennis during. Assistance is always welcome to help with site maintenance and working bees. More on Facebook www.facebook.com/jinderatennis/



Jindera Country Golf Club – run entirely by volunteers the golf club is a beautiful setting to get out and about. Find out the latest the club is up to on pages 18 & 19.



Jindera Anglers Club—our local fishing club run comps regularly and support numerous community events. More on Facebook - www.facebook.com/



Continued on page 5

Are you available Wednesdays, Thursdays or Saturday mornings?

Join our team of Op Shop Volunteers and help us make a difference in our community!

Contact us through the details below or pop by our Op Shop or Office, Tuesday to Friday to find our more!

Rural CareLink inc.

Join our TEAM

0475 594 073 or 0260 263001

www.ruralcarelink.org.au

office@ruralcarelink.org.au

Volunteer Week - Your Year to Volunteer- continued.



Jindera Swimming Pool

Years of continuous fundraising helped Jindera get its very own pool. Hugely popular through summer the pool committee is always looking for support in the management of the pool and canteen. *Information & contact:* - [facebook](#) - Ph: 02 6026 3900 - www.greaterhume.nsw.gov.au/Living-in-Greater-Hume/Public-Swimming-Pools



Jindera Theatrical Society

A group of local creatives will be putting a call out for auditions for their next production soon, keep an eye on Facebook for more information! *Information & contact:* - [facebook](#) - Ph: 02 6026 3900



Jindera Playgroup

The Playgroup meets in the Jindera Hub every Wednesday morning during the school term (see advert page 21). You can support this group by contacting jinderaplaygroup@hotmail.com or on Facebook: - [facebook](#)



Jindera Wetlands

Read more about our local wetlands and how to be involved go to www.envirostories.com.au/2017004-jindera-wetlands



Morgan Country Car Club

Having successfully run the latest Swap Meet and Show and Shine in March, the Morgan Country Car Club welcome new members to share their love of cars and community. You can get in touch with the club via email to morgancountrycarclub@outlook.com or - [facebook](#)



MAKE NEW FRIENDS . . . BECOME A VOLUNTEER!

Jindera Community Diary

MAY 2026

SUNDAY	MONDAY	TUESDAY	WEDNESDAY	THURSDAY	FRIDAY	SATURDAY
<p>31 Jindera Museum Tearooms from 11am Jindera Craft Shop – 11.00am - 2.00pm Jindera Golf Club - MENS & LADIES Comp 8.30am Jindera Community Gardens - AGM 3pm- @ The Gardens Jindera Blokes Walk – Jindera Oval - 7.45am</p>					<p>1 Gentle Exercise Class Jindera Hub – 10.00am Jindera Golf Club Chook Run – 3.00pm Jindera Anglers Club Club House, Jindera Reserve - 5.30pm</p>	<p>2  Round 4 vs Henty @ Home</p>
<p>3 Jindera Museum Tearooms from 11am Jindera Craft Shop – 11.00am - 2.00pm Jindera Golf Club - MENS & LADIES Comp 11.30am Jindera Blokes Walk – Jindera Oval - 7.45am</p>	<p>4 Jindera Golf Club - Ladies Comp 9 Hole 8.30am</p> 	<p>5 Morgan Country CAR CLUB BBQ precedes 7.00pm meeting - Club House - Jindera Rec. Reserve Sit "n" Knit Ladies Knitting Group Jindera Hub Library 10.00am -12.00pm</p>	<p>6 CWA Meeting Jindera School of Arts Hall - 10am Jindera Golf Club Vets – 8.30am Stitch & Chat Craft Group - Jindera Hub 2.00 - 3.30pm Playgroup Jindera Community Hub 9.30-11.30am</p>	<p>7 Jindera Golf Club - Ladies Comp 18 Hole 11.30am</p>	<p>8 Gentle Exercise Class Jindera Hub – 10.00am Jindera Golf Club Chook Run – 3.00pm Jindera Anglers Club Club House, Jindera Reserve - 5.30pm</p> 	<p>9 Farrer Election Day Jindera Craft Shop Mothers Day Stall 8.30am - IGA</p>
<p>10 Jindera Museum Tearooms from 11am Jindera Craft Shop – 11.00am - 2.00pm Jindera Golf Club - MENS & LADIES Comp 11.30am Jindera Blokes Walk – Jindera Oval - 7.45am</p> <p>Happy Mother's Day!</p>	<p>11 Jindera Golf Club - Ladies Comp 9 Hole 8.30am</p>	<p>12 Jindera Child & Family HEALTH CLINIC Jindera Community Hub Phone: 6025 4822 Sit "n" Knit Ladies Knitting Group Jindera Hub Library 10.00am -12.00pm</p> 	<p>13 Jindera Golf Club Vets – 8.30am Playgroup Jindera Community Hub 9.30-11.30am</p>	<p>14 Jindera Library Raffia Braiding Workshop 2.00pm-3.00pm</p> <p>Jindera Golf Club - Ladies Comp 18 Hole 11..30am</p>	<p>15 Jindera Golf Club Chook Run – 3.00pm Gentle Exercise Class Jindera Hub – 10.00am Jindera Anglers Club Club House, Jindera Reserve 5.30pm</p>	<p>16  Round 6 vs Billabong Crows @ Home - Breast Cancer Awareness Day and Ferret Racing</p>
<p>17 Jindera Museum - Tearooms from 11am Jindera Craft Shop – 11.00am - 2.00pm Jindera Golf Club - MENS & LADIES Comp 11.30am Jindera Blokes Walk – Jindera Oval - 7.45am</p>	<p>18 Jindera Golf Club - Ladies Comp 9 Hole 8.30am</p>	<p>19 Storytime Jindera Library 11.00am Community Hub Sit "n" Knit Ladies Knitting Group Jindera Hub Library 10.00am -12.00pm Friends at the Library Space for Adults Community Hub - 2pm</p>	<p>20 Playgroup Jindera Community Hub 9.30-11.30am Jindera Golf Club Vets – 8.30am</p> 	<p>21 Jindera Golf Club - Ladies Comp 18 Hole 11..30am</p>	<p>22 Gentle Exercise Class Jindera Hub – 10.00am Jindera Golf Club Chook Run – 3.00pm Jindera Anglers Club Club House, Jindera Reserve - 5.30pm</p>	<p>23</p>
<p>24 Jindera Craft Shop – 11.00am - 2.00pm Jindera Golf Club - MENS & LADIES Comp 11.30am Jindera Blokes Walk – Jindera Oval - 7.45am</p>	<p>25 Jindera Golf Club - Ladies Comp 9 Hole 8.30am</p>	<p>26 Sit "n" Knit Ladies Knitting Group Jindera Hub Library 10.00am -12.00pm</p> 	<p>27 Playgroup Jindera Community Hub 9.30-11.30am Jindera Golf Club Vets – 8.30am</p>	<p>28 Jindera Golf Club - Ladies Comp 18 Hole 11..30am</p>	<p>29 Gentle Exercise Class Jindera Hub – 10.00am Jindera Golf Club Chook Run – 3.00pm Jindera Anglers Club Club House, Jindera Reserve - 5.30</p>	<p>30  Round 8 vs Murray Magpies @ Home</p>

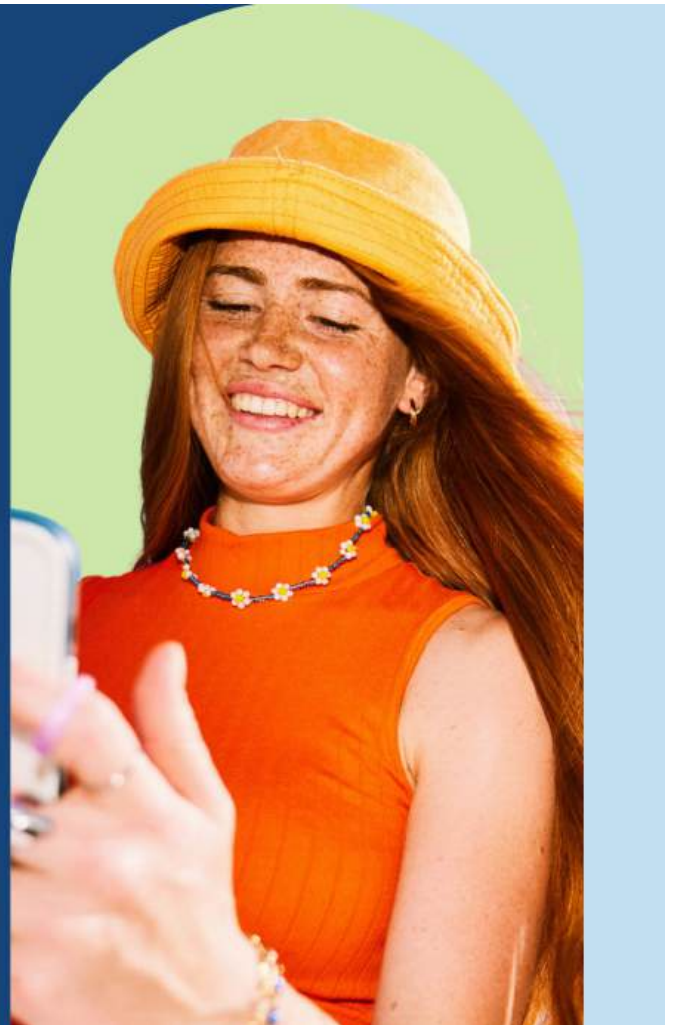
**Do you have an event you would like added to the
 Jindera Community Diary
 CONTACT US ON: jinderanews@ruralcarelink.org.au**



**YOU DO THE
5% DEPOSIT.
WE'LL DO
THE REST.**

Visit humbank.com.au/firsthomebuyers

*Australian Government 5% Deposit Scheme eligibility criteria apply.
Hume Bank Limited ABN 85 051 868 556 AFSL and Australian Credit Licence No. 244248



SOL PÁDEL



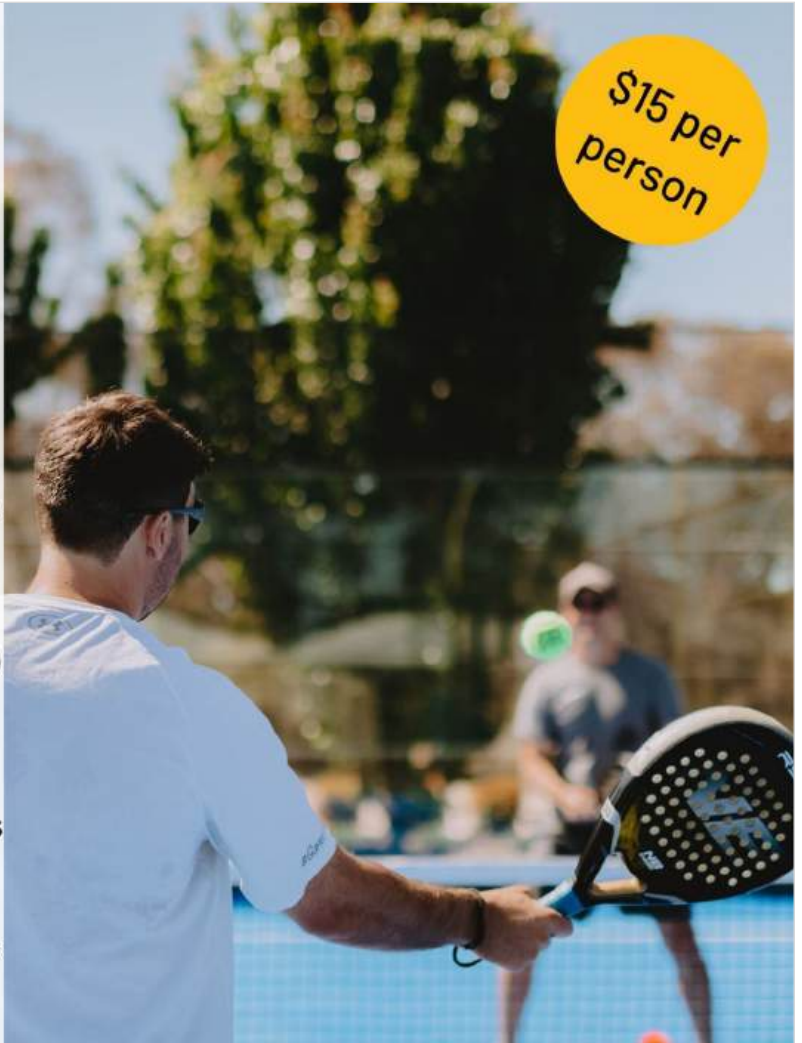
SERVING UP THE FUN

HAVE YOU TRIED PADEL?

Padel is an exciting new sport to Australia!
Easy to learn and fun for all ages!

Book a court - 0498 797 290
Open 7 days a week

Licensed bar - great cocktails and beers
Great for parties or family groups
Team building or a corporate events
Ask about our burger + padel packages
THURGOONA - next to the Golf Club





Contact Rachel: 0407 122 732
rachel@flowermilljindera.com.au



Book an appointment to visit our studio or find our fresh flowers daily at the Next Level Café in Jindera
www.flowermilljindera.com.au



Anglican Parish of Northern Albury

Where Faith Makes a Home

St. Paul's Jindera

Sundays 9.30 am

Rev'd Cathy Carden - Mobile: 0412 592 672
cathycarden21@bigpond.com

Rev'd Rex Everett - Mobile: 0427 861 130
rex.everett@bigpond.com

Parish office : 6040 6457

website: [https:// anglicannorthernalbury.org.au](https://anglicannorthernalbury.org.au)

St Marys Catholic Church

Urana Road Jindera

Sunday Mass 9am

Confessions before Mass

Baptisms, Weddings, Funerals

Contact 02 6025 1784

lavington@wagga.catholic.org.au

BURRUMBUTOCK
LUTHERAN PARISH



Growing Where We are Planted

Sunday Worship Service Times

Bethlehem Jindera 9am

Adams Street, Jindera

Trinity Bethel, Holy Cross Burrumbuttock and St Peter's Gerogery: please check our website for worship times

<https://burrumbuttock-parish.lutheran.org.au>

Contact: David Schmidt 0427 200 035

You're welcome at

Lavington Baptist Church

Youth Group- 13 years +
7:30 - 9:30pm

Good News Club 9-12 years
6 - 7:30pm

Sparks 4 - 8 yrs
6 - 7:30pm



www.lavingtonbaptistchurch.com

Friday Nights during school terms
460 Pernell St, Lavington
Tel: (02) 60 215880

Gateway
LIFE CHURCH

SUNDAYS

10am (AU) & 12:30pm (AF)

Where: Corner Union Road & 1108 Corella Street, North Albury

ALL WELCOME!   

Numerous Local Events

What a busy couple of weeks it has been in Jindera, the start of the football/ netball season with a family day, the Garage Sale and then ANZAC Day. A couple of campers rang to say they were staying overnight purely to experience the Dawn Service. They were travelling between Tocumwal and Yarrowonga and did an internet search to see where a dawn service was being held in between the two places.

Memorial Park Improvements

Members of the community who attended the services were complimentary about the improvements which have been made to the Memorial Park area. New to the environs is an information sign explaining the background of the two Lone Pine trees. Friends of the Memorial will meet shortly to discuss and plan for Stage 2.



IGA carpark

Walking in the IGA carpark the other day I tried to use the central pathway but had great difficulty. This area is designed to let people wheeling their trolleys to access their cars parked up the middle without crossing the roadway. Please be considerate of other users of this area which can get very busy. Obviously when the Jindera Plaza was first built car parking was not such an issue as vehicles were smaller. No response has been given from the new owners as to how they will fix the poor condition of the asphalt and white lines etc.



Jindera Pool

Council is undertaking major investigations into the condition of the Jindera Pool in order to make some big decisions as to its future. The pool has the highest usage rates in Greater Hume.

Adventure Playground

A petition will continue to be circulated about the completion of the Adventure Playground car park area and the removal of the **four damaged trees**. The extra 20 parking spaces will help alleviate the congestion which occurs in this popular space. Having a sealed carpark with lines designating parking spaces will be a positive step. There have been reports of accidents happening on the asphalt pathway revealing safety issues. Mums pushing strollers and prams along that section find it very rough. This section will be concreted to match the existing path. New trees are going to be planted



Jindera's Wonderful Wetlands

Looking around Jindera it is obvious that we are blessed with an abundance of trees and other shrubs. Have a wander through the Wetlands at the end of the Rec. Reserve.



Local Footpaths

The footpath from Urana St to Cade Cr has been completed which I am sure has made those residents very happy. Future plans are being budgeted for to put in a concrete pathway along the East side of the road up to the school of Arts Hall.

Trucks ... Please Slow Down

The number of trucks accessing Urana St is considerable at the moment. Operators have been asked to please slow down particularly in the central block.

Friends in Action (Caritas) Diary: 2026

A Group that can offer emotional and spiritual support and opportunity for growth through caring and personal relationships.

13th May

A Nanny Goat Day:

- M/tea: 10am Madem Espresso (27 Muntz St, Wangaratta).
- Activity: 11am visit Little Cedar Goat Farm \$10 tour/tasting (21 Bowers Road, Winton).
- Lunch: 1.30pm The Railyard (60 Norton Street Wangaratta).
- Depart: St Paul's - 9.00am
- Contact: **Sharon Redding 0418 466 331.**

Friendship in Action

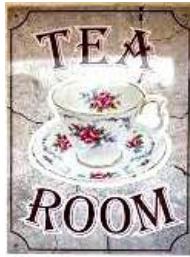
JINDERERA

• PIONEER MUSEUM •

April has seen Easter come and go along with the first round of school holidays for the year. As a consequence, we have seen an increase in family visitation to the museum, often with grand-parents in tow. We have also had visitation from a couple of groups from out of town, a family reunion group and a birthday celebration as well during the month. I was also invited to provide a presentation on the museum to the Lavington Lions Club.

Restoration and Improvements

Over the past month we have had the opportunity to complete some improvements to the Tea Room and vestibule floors. A new coat of shellac to these areas has enhanced them considerably and we will endeavour to work through the rest of the floors as time permits. This is obviously not an easy exercise as all of the furniture needs to be removed from the rooms before the floors can be thoroughly cleaned and then painted. Shellac is an interesting product; it was used extensively on timber floors and furniture in the past. It is the basis of the French polishing process. The shellac flakes are dissolved in methylated spirits and then the product is 'mopped' over the floor. It dries very quickly and a second coat can be added in a short period of time following the first. The resulting finish is a warm glow, that enhances the timber and grain. It looks very impressive.



The Men's Shed group have been busily working on displays in the new shed and positioning the collection of tractors. They have added workable gates to the blacksmith section of the **Horse Drawn and Agricultural Machinery Shed** and have moved our collection of headers in preparation for the arrival of a new addition. Gates and fencing have been placed around the concrete area in the new shed where we will reconstruct a Tiger Moth plane.

Bunn's Air Machines

Many would be unaware, Bungowannah is the home of 2 very rare people who are known around the world for their ability to repair and restore plane engines, particularly those from older aircraft. The Bunn Brothers of Bungowannah have been fixing planes and their engines for many decades. Plane engines and components come in from all over the world, for them to get back into working order. The Bunn family settled on the land once owned by the family of **Russell Drysdale**, the famous Australian artist.



Russell was the Patron for the museum for many years prior to his death. We have a collection of prints of his work, donated by him, along with a limited-edition book of his sketches. One of these sketches shows a young boy at a shop counter and Russell did this sketch depicting his trips to Wagners Store as a young boy.

Robert Bunn has donated to the museum a collection of plane parts that will come together to make a Tiger Moth. We have a couple of aircraft enthusiasts who will work on this project and sometime in the future, when complete, it will hang in another edition to the sheds in this section of the museum. We will watch with great excitement to see this project come to fruition over time. It will be a fitting addition to the collection given the connection of the property and the proximity to the township.

Anzac Day

Our creative and very thoughtful member, Kerry, has again produced a lovely display for Anzac Day. You will find this in the doorway of the gallery, next to the shop entrance and visible from the shop veranda. The poppy display extends to the garden area where it adorns our centrally located Pepper Tree. The original memorial to the soldiers from the area that defended our country, is now in the care of the museum. The new memorial has been erected for Anzac Day, along with new seating. We are honoured to have this original memorial as part of our collection. There is also a tribute to the accompanying animals of soldiers during the wars that



features in our machinery area. This is a beautiful reminder of those that gave so much that we might have the country that we live in today.

Vale Cora Schmidt

It is with great sadness we have farewelled another of our long-standing members at the Museum this month; Cora Schmidt has worked in and with the museum for many of her years, particularly when the museum was first established. Along with her husband Kelso, a founding member of the museum, she worked to ensure the museum was acknowledged and became a success. She was a dedicated worker in the Tea Room and for many of the Museum functions held over the years. We will remember her with great fondness as one of the many who helped make the museum what it is today.

Margie Wehner

President - 0408 409 842



Discover
THE MAGIC OF YESTERYEAR

Spread over two acres this renowned museum features multiple dwellings, exhibits and displays which showcase the early pioneering days and heritage of the region. All set within lovely gardens in the heart of Jindera.

OPEN SEVEN DAYS
Tearoom open every Sunday from 11am

Jindera Museum - new Australia

JINDERERA
• PIONEER MUSEUM •

118 Urana Street, 15kms north of Albury
www.jinderamuseum.com.au
Entry fees apply

Open Hours
Daily - 10am to 4pm
Enquiries 0408 409 842

Jindera GARAGE SALE - continued from front page

Thank you to our wonderful sponsors of this annual event.





Jindera Preschool Association Inc.
 151 Adams Street, JINDERA NSW 2642
 02 6026 3468
info@jinderapreschool.com.au
 ABN: 63 098 596 915

Kangaroo Group – Tuesday/Thursday	Teacher - Chloe Roberts - Bach. of Ed. Early Childhood Masters of Special Education
Wombat Group – Monday/Wednesday	Teacher - Kerry Mundy - Bach. of Teaching (Early Childhood) Bach. of Educational Studies
Kookaburra Group – Friday	Teacher - Olivia Phegan - Bach of Ed. Early Childhood

Term Two

We begin term two with the most beautiful of Autumn days. The children love playing outdoors no matter what the weather and they are noticing the change in seasons, both the cooler weather and the changing colours of the leaves.

We have now created our annual ‘We Belong’ canvas, filled with the handprints of every child and staff member—a true reflection of our inclusive community. This special project is a celebration of belonging, connection, and the unique role each individual plays in our centre.

Each handprint tells a story, representing not only the presence of every child and educator, but also the sense of pride, identity, and togetherness we nurture each day.

As the canvas came together, it was wonderful to see the respect, excitement and care shown by the children.

Our ‘We Belong’ banner serves as a colourful and meaningful reminder that every person is valued, respected, and an important part of our shared community. We are proud to display this collaborative piece in our preschool and the spirit of inclusion it represents. At the heart of the design, a meaningful symbol reflects a gathering around a central point, with people coming together—just as we do each day at preschool.



PRESCHOOL POSITIONS AVAILABLE

Funded positions are available for Term 2

***5yo group (Tue & Thu)**

***4yo group (Mon & Wed)**

***3yo group (Fri)**

Be first in line – sign up to our 2027
Waiting List!

jinderapreschool.com.au

THE BENEFITS OF VOLUNTEERING WITH **LIFELINE ALBURY WODONGA**



✓ **Meet new people**
Our local volunteers are a tight -knit group who are passionate about helping their local community - and have a great time doing it!

✓ **Connection with local community**
Volunteering is a great way to build connections with like minded people whilst contributing to achieve Lifelines vision of an Australia free from suicide.

✓ **Improve your health**
Volunteering has been shown to positively impact your mental and physical wellbeing!

✓ **Make a real difference**
Our drivers, balers, sorters and retail volunteers play a vital role in ensuring our work can continue.

✓ **Learn new skills**
When you volunteer for Lifeline, you gain valuable skills.

TO LEARN MORE:

Call or text 0418 690 336
Email us: admin.aw@lifeline.org.au
Or drop into our Lifeline stores to have a chat!



Become a Foster Carer today

Find out more about caring

All children and young people deserve to be safe, have a sense of belonging and be supported to reach their full potential.

Ever thought about caring? Find out more by contacting our friendly team or visiting www.umfc.com.au



For further information
P: 02 6055 8000

E: fostercareenquiries@umfc.com.au



JINDERA BUSH FIRE BRIGADE



by "Poppa Pomegranate"

Thank you to everyone who donated to the Good Friday Royal Children's Hospital appeal.

Through your generosity, we again raised over \$7000 as part of the total raised by regional emergency services. Special thanks to President Dave for organising the crews.



Participants will become members of Jindera Rural Fire Brigade, while training alongside other juniors at Lavington.

Group Captain Barnes said, "the program will include visits to other local Brigades and Emergency Services, station tours, truck and equipment familiarisation, life skills, and teamwork development through theory and interactive learning".

It was fantastic to see so many people attend the ANZAC Day Dawn service, our gunfire breakfast raised \$852.75 for legacy this year (see photo below). It was great to see so many children taking an interest again this year.



The brigade is honoured to be able to lay a wreath at the morning ANZAC service. This has been a tradition now for several years. It came about as a special request from our station officer at the time, Barry Osborne; he asked that we continue this tradition following his death, which was imminent. Barry (aka Mr. Movies) was a strong supporter of his community. If you were lucky enough to meet him, he always had a fantail or two for you in his pocket.



The program will start on the 4th of May. The program is designed for junior members to join at any time; they will be able to work through the program over a school term or two. If you are interested, please start the process by applying for a membership on-line on the NSW RFS website.

There is a guide for parents to read on this link

[Guide-For-Parents.pdf](#)

Please read this and give our Captain Graham a call on 0427 263 414. The program is designed to introduce cadets to what volunteering in their local community is and how it can benefit them. If anyone else in the family would like to join us, we run firefighter training at the fire station every second Saturday drop in and talk to us. We have many roles that you can help us with if you do not want to get on a fire truck.

We continue to ask that you please take care when burning off on agricultural land or pile burns on small or large acreage blocks. You must notify the NSW RFS and your neighbours 24 hours before lighting a fire on your property.

The cooler months are with us now, if you have not checked your fireplaces or had your gas heaters checked by a licensed Gas Fitter Plumber, please do so to ensure they are safe to use. This will help to protect your families during the winter months.

Thanks for your ongoing support of the Brigade.

RFS Cadet Training

Our Group officer, Kathy Barnes, has offered places to all Brigades in the group to get junior members involved in the Cadet Training program at the Lavington Rural Fire Brigade station, 629 Krautz Street Lavington on Monday nights 6:00pm till 8:00pm. Our Captain Graham said, "our friends at Lavington have invited Jindera based youth between 14 and 18, who are interested in getting involved with the fire brigade, to join this great program. It provides an opportunity for our young people of Jindera to build confidence, learn valuable skills, and be part of something bigger".

The Cadet training is structured with a range of hands-on firefighting skills that develop team working skills.



JINDERA STORAGE

STORAGE SHEDS NOW AVAILABLE Offered in Different Sizes



Accessible and Easy to Find
 Situated on Stockwell Road in
 the Jindera Industrial Estate
 Ideal for Furniture, Vehicles,
 Office & Business Records, etc.

Contact Ian Ritchie Real Estate on 02 6025 9260

Jindera CWA News

May 2026

Anzac Day morning tea was prepared in the Jindera Hall following the 10.30 Anzac Day service at the cenotaph. This has been an ongoing tradition for many years provided by the CWA ladies. Thank you to all who supported us. Any monies received at the morning tea is donated to Legacy.

Our members were very impressed with the upgrade of the cenotaph. We were still able to use some of our red poppies and "LEST WE FORGET" poppy display.

Our Meetings are held on the:

**First Wednesday of Each Month in
 the School of Arts Hall, Jindera at 10AM
 New Members and Visitors are Most Welcome.**

Yours in CWA Friendship,
 Bev. Blair
 Publicity Officer.



New Cenotaph with LEST WE FORGET poppy display.



President Margaret McMaster with her grandchildren laying wreath at cenotaph.



Cenotaph fence lined with red poppies made by CWA ladies.



BuyLocal
in Greater Hume

SHOP in JINDERA



Upcoming workshop - *Celebrating Women with a Raffia Braiding Workshop*

Greater Hume Council libraries invite women within our community, aged 18 & over, to relax, unwind and connect whilst learning different braiding techniques for basket making (*see advert page 17*).

A free event with light refreshments. Turn your braiding into a small bag or basket, after the workshop, with the pattern provided. Limited numbers. **Bookings essential. Phone 02 6036 0100** to book your spot! The workshops will be held at different times so please choose the library location that works for you. **Jindera Library-Thursday 14 May 2-3pm**

Holbrook - Sat. 9 May 9.30-10.30am - Culcairn - Mon. 11 May 5.30-6.30pm - Henty - Sat. 16 May 9.30-10.30am

Friends at the Library

Friends at the Library has commenced at our four libraries. All who attended had such a good morning. It was relaxing and fun and so good to hear laughter and genuine enjoyment in the libraries. We encourage more to join in. The group is open to all ages. In fact, the more multi-generational our group becomes, the better! If you would like to come just for the company, and not the board game, we have mindful colouring and some brain health puzzles that are also relaxing and rewarding.

There is no need to book, just come when it suits you.

Over time, we are hoping to bring more events to the group, maybe a craft activity or maybe a guest speaker.

If you have not been to your library recently, we encourage you to try out the Friends at the Library group to see just how warm and inviting a place the library is. - **Jindera Library - Third Tuesday of each month at 2pm**



Popular Author Series



Along with lots of new books arriving weekly at all four libraries within Greater Hume Council, recently we have replaced some of our ageing copies of popular series with new ones. Call in and check out the shelves for Lee Child, Agatha Christie, Harlan Coben, Freida McFadden, Stephen King, David Baldacci, Candice Fox, Lesley Pearse, Wilbur Smith and more.



Feedback from the community about planning for future SENIORS' WEEK events

We have had very positive feedback about our 2026 event – Celebrating the Seekers with Keith Potger. Results from the survey show that the community -

- * Would love to attend similar musical events in the future
- * Be happy to make a contribution towards the cost of such events
- * Would like to see the event location shared between the different towns in the Greater Hume area each year
- * Would prefer the event to be held during the day, with Sunday afternoon being popular

If you would like to share your feedback with us, please call in to the library or email

Holbrook.library@greaterhume.nsw.gov.au



JINDERA COMMUNITY DIRECTORY

Anglers Club	0427 238 281	Meals on Wheels	(02) 6036 3677
Friends in Action (Caritas)	0438 262 480	Morgan Country CAR CLUB	0428 401 991
Greater Hume Children's Services	1800 954 999	Multi Purpose Stadium Committee.....	0407 357 082
Community Forum	0498 092 200	Netball Club.....	0407 186 073
Conway Printing.....	6026 3611	OP SHOP	(02) 6026 3001
CWA	0400 490 992	Pony Club	6026 3484
Football Club.....	0427 253 587	Pre School.....	6026 3468
Friends of Jindera Wet Lands.....	0423 204 263	Recreation Reserve	0438 263 417
Golf Club.....	0427 431 696	Rural Care Link (RCL)	0475 594 073
Jindera Community Garden.....	0400 023 290	St Johns Lutheran School.....	6026 3220
Jindera Lutheran Church.....	0438 263 417	St Mary MacKillop College.....	6045 9422
Jindera Pioneer Museum	6026 3622	St Paul's Anglican Church.....	6040 6457
Jindera Public School.....	6026 3280	Swimming Pool	6026 3900
Jindera Post Office.....	6026 3201	Tennis Club.....	0412 314 617

Friends at the Library

Roll, Relax, & Reconnect



Your local library invites you to join Friends at the Library each month, a space for adults to play board games, enjoy some colouring/crafts, and meet new people.

Come along on your own or bring a friend; there's always a seat at the table.

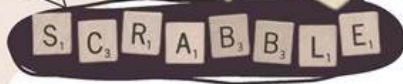
No bookings required



Commencing:

- Culcairn Library - Friday 17th April at 10am
- Henty Library - Monday 13th April at 10am
- Jindera Library - Tuesday 21st April at 2pm
- Holbrook Library - Friday 10th April at 10am

BOARD GAMES



Raffia Braiding Workshop

Greater Hume Council libraries invite women aged 18+ to relax, unwind, connect and enjoy this free workshop

- Saturday 9 May Holbrook Library 9.30-10.30am
- Monday 11 May Culcairn Library 5.30-6.30pm
- Thursday 14 May Jindera Library 2-3pm
- Saturday 16 May Henty Library 9.30-10.30am

Bookings essential
Limited numbers
Phone 02 6036 0100

Celebrating Women 2026



JINDERA LIBRARY STORYTIME



11am
Every third
Tuesday of the
month in 2026

FREE

We welcome you & your children, 0-5 years of age, to join us for stories, singing, movement, craft & so much fun!



FREE

JINDERA CHILD AND FAMILY HEALTH CLINIC

JINDERA COMMUNITY HUB

83 Urana Street, Jindera

Every 2ND TUESDAY of the Month



NEXT CLINIC - Tuesday 12th MAY

To make an **APPOINTMENT** or for more **INFORMATION** please call Ross Circuit Child and Family Health on **6025 4822**





131 Dight Street, Jindera 2642
 Phone: (02) 6026 3280
 Email: jindera-p.school@det.nsw.edu.au
 Web: www.jindera-p.schools.nsw.gov.au
 Principal: Emma Andrews

JINDERA PUBLIC SCHOOL TERM 2

We've had a fantastic start to the second term for our wonderful JPS students, who have jumped straight back into learning with enthusiasm and smiles! Classrooms are already buzzing with creativity and curiosity, with students exploring a range of engaging activities. Today, our youngest learners in Kindergarten have been getting hands-on with nature, using leaves to create beautiful shapes, while others have been working on meaningful artwork in preparation for ANZAC Day. It's been a joy to see such a positive and energetic return to school. Here's to a fantastic Term 2 ahead!



WHAT'S HAPPENING WEEKS 2 & 3

- SATURDAY 25 APRIL** ANZAC DAY SERVICE 10:30am at Jindera War Memorial.
- TUESDAY 28 APRIL** SRPSSA NETBALL KNOCKOUT Selected students versus Howlong. All the best and Good luck!
- WEDNESDAY 29 APRIL** BOCCIA COMPETITION at Lauren Jackson Stadium Selected Students. Have a fantastic time!
- THURSDAY 30 APRIL** SRPSSA CROSS COUNTRY Lets Go JPS!
- THURSDAY 30 APRIL** P&C MEETING 5:30pm in Staff Room All Welcome!
- THURSDAY 7 MAY** JPS ATHLETICS CARNIVAL PART 2
- FRIDAY 8 MAY** SRC FUTURE DREAMS DAY

LET'S HAVE A GREAT WEEKS 2 & 3!

ACTIVE KIDS ARE HEALTHY KIDS

WALK SAFELY TO SCHOOL DAY

JOIN US

Until they're ten, children must always hold an adult's hand when crossing the road

National Road Safety Week 2025
 WALK.COM.AU
 SUPPORTED BY THE AUSTRALIAN GOVERNMENT AND ALL STATE, TERRITORY AND LOCAL GOVERNMENTS

JINDERA PUBLIC SCHOOL WELCOME BACK!

WHAT A FANTASTIC START TO THE TERM!

STAGE 2 SPORT DAY - AFL DRILLS!

Our Stage 2 students kicked off the year with an awesome Sport Day full of AFL skills, teamwork and plenty of laughs! From marks to goals, it was a fantastic way to build connections, have fun and get active together.

BRING ON ANOTHER GREAT TERM!

PSSA CRICKET



Jindera Public travelled to Ernest Park to play against Albury Public School in PSSA Cricket. Bowling first, wickets went to Cruz, Charlie, Ava, and Oakley, while Charlie top-scored with the bat. Although we didn't win, it was a great achievement to field a team again after not being able to do so last year. A big congratulations to everyone for participating, and we cannot wait to go again next year



JINDERA COMMUNITY FORUM

Next Meeting is at the Jindera Community Hub (entry via rear carpark) ON

Tuesday 16th June 2026

at 7:30pm

Items for the agenda are welcome by emailing jinderacommunityforum@gmail.com



Come and join a group of locals who are interested in our community and its people, and who would like to help improve the facilities our community offers to both visitors and residents alike.

The following resident's questions were addressed by Greg Blackie (GHC) at the April meeting of the Forum:

Settlement pond on Urana Rd at new subdivision - Greg explained this retention of drainage from the site is a requirement of the subdivision. Drainage is occurring now and the site will slowly empty.

Speed of traffic on dirt section of Pioneer Dr—Greg explained this section of road cannot be speed limited – people should drive to the conditions – this is a police issue.

Pool—council will comment on this in the future.

Parking in the CBD – is to be considered in more detail within the study on CBD in general. This will include traffic flow, angle parking etc. Greg mentioned they have insufficient rangers to police time limited parking. Shop owners and staff should be encouraged to park on the side streets or at the rear of premises.

A bin in front of the Fox and Brew—Greg mentioned a Customer Action Request has not been submitted for this.

An alternate route for the main street through traffic— Greg mentioned this has been looked at as part of the future planning, but it is not considered necessary at this time.

Vandalism of street signage – this is difficult to police. If brought to council's attention they will replace but for economies of scale, they wait until they need to replace several to obtain the signs at a better price.

Adventure Playground trees – the 2 petitions, one for retention of the trees and one for removal of the trees, will be considered by council. They will obtain additional information from tree specialists and move forward with what they consider to be the best outcome for the site. It was suggested that council could be more open with their decision making and perhaps these could be reported in the Jindera News.

Resealing of Dight St West - this will occur when subdivision works are complete. This has been allowed for in budget.

Marking of the accessible ramps to the footpath on Urana St – this will occur soon.

Greg then proceeded with his presentation on future works for the Jindera township.

Flood Protection Works – Council has obtained grant funding to update the Jindera Flood Study and Floodplain Risk Management Plan – with council funds a total of \$253 k over the next 2 years

Jindera Recreation Ground - Reconstruct access road on northern side of netball courts and create parking area
Discussion with Rec Committee and Netball Club \$150k – 27/28

Park Construction – A second BBQ will be constructed, with shelter and table - \$80 k in 26/27.

Jindera Pioneer Park – power will be installed to replace the gas BBQ and to light toilets - \$60 k in 26/27

Replace Retaining walls in Village Green – 100k -28/29

Replace poles in Memorial (ANZAC) park with seating – 100k 28/29

Street Construction - Jindera St (Pioneer Drive to Jindera St) Construction \$500k in 27/28

Dight St (Watson St to Jindera St) Construction \$700k in 28/29 - Note these projects may be swapped dependent upon Lutheran Subdivision Housing progression of housing in estate

Urana St - Adams St to Creek St (CBD) - \$750k 29/30 (ie pedestrian crossing? / Angle parking? Etc)

Ribery Court – Glenholm Drainage works \$100 k in 26/27

CBD Laneway (Adams to Creek st) seal and install drainage \$200k - 28/29

Reseals - Glenellen Road Reseal (Gerogery Rd to 420m north of Bethel St) 105k - 29/30; Gibson St Reseal 10k - 27/28

Footpath - Urana St (Cade Court to Hall) eastside \$80k – 27/28 (owners contribution.)

Kerb and Channel - Creek St (Huon St to Mitchell St) southside \$100k - 27/28 (owners contribution) construction of Mitchell St Subdivision

Urana Road - Replace Culvert on Urana Road north of Jindera Walla Rd intersection \$500k - 28/29

Current Projects

Will still have funds in current budget to undertake the completion of the carpark at Jindera Adventure Playground - tree removal, kerb and channel, concrete footpath, graveling and sealing of carpark and tree planting to complete project

Jelbart Road – Sealing next week, then drain tidy up and guard rail installation

Cade Court footpath and K&C completed

Installation of bus shelter at Urana and Hueske Road intersection on west side.

Continued page 21

AGnVET

Real Estate



ADRIAN
O'BRIEN



ROBYN
ARMSTRONG



NICOLA
PAYNE

BUY | SELL

Rural | Residential | Property Management

Henty, Culcairn, Walla Walla, Yerong Creek,
Holbrook, The Rock, Jindera, Rand, Lockhart,
Albury and anywhere in between

propertyhenty@agnvet.com.au | 02 6929 3102

Term 2 2026

JINDERA PLAYGROUP

NSW Playgroups Registered

Week 1 22nd April Earth Day 	Week 2 29th April My Healthy Body	Week 3 6th May Mothers Day	Week 4 13th May Space Adventure
Week 5 20th May Biggest Morning Tea 	Week 6 27th May Buzzing Bees	Week 7 3rd June Winter Is Here	
Week 8 10th June Dinosaur Zone	Week 9 17th June Transport Week	Week 10 24th June End of term PARTY! 	

@ The Jindera Hub 9:30-11:30am
Join our Facebook page for weekly updates

JINDERA COMMUNITY FORUM

April 2026 Meeting - *continued*

Future Years

28/29 Luther Road to Colonial Drive water main extension \$290k
29/30 Hawthorn Road Water Main Augmentation \$882k

Water and Sewer

Jindera Wastewater Augmentation Stage \$950k – 26/27, \$1.150m -27/28 Total \$2.1m
Includes Wastewater Plant Upgrade and Upgrades to SPS1,2 and 5 including wet weather surge tanks
Future Upgrades to Water and Sewer for the township will total \$43 million (Water) and \$76 Million (Sewer)
Grants will be applied for to assist this process. If no grants are received, loans will be paid back by Water and Sewer
Annual charges and developer contributions
Water Annual charges will be increased to 8% for the next two years. They will then go back to CPI ie currently about \$1250/year
Wastewater (Sewer) Annual Charges will be increased by 8% next year, and then increased 10 – 15% for 10 years (ie to double over next 10 years) ie currently about \$630 a year and needs to get to \$1300/year

Developer Contributions

Water Current \$3,640 to \$3,825 (to increase to \$10,675 following IPart Approval) per lot
Wastewater (Sewer) Current \$4,945 to \$5,195 (to increase to \$20,465 following IPart Approval) per lot
We cannot go above \$20,000 of all contributions per lot without IPart Approval. However, council can determine a Planning Agreement with developers, to set a fee. This needs to be done via a review of the Developer Servicing Plan
Annual charges can be used to rectify or renew the existing scheme
Developer charges are for new or increased capacity of assets
As we purchase water from Albury council must pass on pricing Albury sets for water supply. Charges for water supply will increase about 8% this year.

There is also a concept drawing for **Jindera Water and Sewerage** over the next 50 years if anyone would like a copy—please email jinderacommunityforum@gmail.com.

Many thanks to Jenny O'Neill and Marg Wehner for taking the April meeting under short notice and to Greg Blackie for his ever informative presentation to us.

For more information contact:

jinderacommunityforum@gmail.com or phone Kathy Anderson on 0407 357 082.

Youth Week Art Competition *Get Creative!*

WIN A POLAROID CAMERA PACK

Got a creative streak? Whether you love painting, drawing, sculpting or anything in between — this is your chance to show it off!

We're inviting all young people across Greater Hume to submit their original artwork for our Youth Week Art Competition. The winning piece will be proudly displayed in the Culcairn Youth Room.

This competition is open to ages 12–18 who live within the Greater Hume Council area.

It's your opportunity to express yourself, share your talent, and be part of something creative in your community.

- ◆ Entries are open now until **29 May 2026**
- ◆ One entry per person
- ◆ Submit your artwork via the Greater Hume Council website
- ◆ All artwork must be original and appropriate for display in a public youth space

**Don't miss your chance to have
your artwork showcased ...
... we can't wait to see what you create!**



YOUTH WEEK ART COMPETITION 2026

ENTER FOR YOUR CHANCE TO HAVE YOUR ARTWORK SHOWCASED IN THE CULCAIRN YOUTH ROOM

WHAT TO CREATE: PAINTING, DRAWING, SCULPTURE... ANYTHING THAT CAN BE DISPLAYED IN OUR YOUTH ROOM	WHO CAN ENTER: MUST LIVE WITHIN THE GREATER HUME COUNCIL AND BE BETWEEN 12 TO 18 YEARS OF AGE.
--	---

**WIN
POLAROID CAMERA PACK**

ENTER VIA: GREATER HUME COUNCIL WEBSITE
COMPETITION DEADLINE: 16 APRIL - 29 MAY 2026

ARTWORK MUST BE: ORIGINAL ARTWORK, APPROPRIATE FOR DISPLAY, ONE ENTRY PER PERSON

RECEIVE

THE JINDERERA NEWS

BY EMAIL

WOULD YOU LIKE TO RECEIVE A DIGITAL COPY OF JINDERERA NEWS?
FOR A FREE MONTHLY COLOUR COPY JUST SEND A REQUEST TO
jinderanews@ruralcarelink.org.au

**NOW
ONLINE**

Access the Current Edition of
The Jindera News
on the Rural Care Link website @
www.ruralcarelink.org.au/the-jindera-news/

The Jindera News publishes and distributes 600 printed copies and
emails digital copies to approx. 270 subscribers each month (except January).
.NOTE: The newspaper is emailed in PDF format and can vary in size from 8 to 12Mb



TYRES WORTH OWNING

JINDERA TYRE SERVICE

129 URANA ST, JINDERA NSW 2642

6026 3400



McMillan Electrical

Craig McMillan
All Electrical Services

📍 PO Box 477, Jindera, NSW

✉️ mcmillanelectrical44@gmail.com

☎️ 0418 966 207

NSW License 151911C
VIC License REC-31010

FUGE EARTHWORKS PTY LTD

SCRAPER DOZER LOADER EXCAVATOR

GRADER TIP TRUCK BOBCAT ROLLER



- Dam Construction or Enlargement
- Site Excavations, Drainage
- Driveways, Entrances
- Bulk & All General Earthworks

PAT FUGE 0447 770 649

375 Molkentin Road, Jindera NSW 2642

BLD Machining

CNC MACHINING FABRICATION & WELDING

Precision:

Milling, Boring & Screwcutting,
Repairs, Maintenance & Modifications
to all plant & equipment

Guaranteed fast and professional service.

Phone Bruce:

0448 790 666

6 BEGG DRIVE, JINDERA

*Fixing the old and broken, designing
and manufacturing the new!*

NA Auto

AUTOMOTIVE ELECTRICAL
DIAGNOSTICS, REPAIRS & PARTS

Neil, Kathy & Rob Anderson

94-96 Urana Street (Po Box 27) Jindera NSW 2642

Ph: 02 6026 3391 Mob: 0428 578 061

Email: sales@naauto.biz Website: www.naauto.biz

Civil Celebrant

- Judy Gray -

Weddings • Baby Namings • Funerals



Conducted in Style



MOBILE: 0418 617 385



Term 2 Day 1

We were delighted to welcome our students back for Term 2 - a term that will be filled with learning, exploring, and building on the knowledge gained in Term 1.

Our students have well and truly settled into the 2026 school year, and we look forward to the many wonderful events and opportunities ahead.



Project Based Learning (PBL)

During Term 1, our Year 5/6 students explored scientific forces as part of their Project-Based Learning.

To consolidate their learning, students worked collaboratively to design, plan and construct a DIY toy that children can make at home, incorporating the scientific forces they investigated. Each group also wrote a clear procedure explaining how to create their toy, to share their learning with the wider school community.

The class also showcased their prototypes to give the rest of the students at St John's an idea of what they can create at home.



Cross Country

We finished off last term with our Annual Cross Country. We are incredibly fortunate to have access to our next door neighbour's paddock for much of our Cross Country, finishing with a sprint around the oval! Thanks so much, Farmer Rob, for your generosity each year, in allowing us to use your paddock and create our track!

Students came prepared with their best attitudes and fast legs, ready for a morning filled with perseverance, house spirit, and plenty of encouragement for their fellow classmates.

A big thank you to TheirCare for the delicious BBQ and to Amanda from Lola's Coffee for keeping us fuelled throughout the morning. What a fantastic way to wrap up term 1!



ANZAC Day 2026

We finished off last term with our Annual Cross Country. We are incredibly fortunate to have access to our next door neighbour's paddock for much of our Cross Country, finishing with a sprint around the oval! Thanks so much, Farmer Rob, for your generosity each year, in allowing us to use your paddock and create our track!

Students came prepared with their best attitudes and fast legs, ready for a morning filled with perseverance, house spirit, and plenty of encouragement for their fellow classmates.

A big thank you to TheirCare for the delicious BBQ and to Amanda from Lola's Coffee for keeping us fuelled throughout the morning. What a fantastic way to wrap up term 1!



ATO Fuel Response Payment Plans



The continually increasing prices of fuel, particularly diesel costs, are affecting so many of us within Jindera and our surrounding areas. While we all feel the effects of these rising costs, our local farmers, businesses and tradespeople are not only feeling the brunt but having to consider how to pass these costs on.

Some relief may be available with The Australian Tax Office responding by providing Payment Plans to **eligible tax payers with an ABN**.

If your business's bottom line has been directly affected by the rising costs in fuel, you can find out if you are eligible for this program by visiting the following website (or search for ATO Fuel Response Payment Plan on the web)

<https://www.ato.gov.au/individuals-and-families/financial-difficulties-and-disasters/ato-fuel-response/ato-fuel-response-payment-plan>

Ensure you have read the eligibility criteria and contact the ATO directly for more information.



LOOKING TO BUY
Garagenalia – Antiques
Collectable Items

NE Victoria & Southern Riverina

CASH PAID

Call Michael 0456 721 581

FREE JIGSAW PUZZLE EXCHANGE

- ◆ **Where:** Jindera Next Level Café - dining area
- ◆ **When:** Cafe Open Hours
- ◆ **Why:** Access to a range of Jigsaw Puzzles
- ◆ **Who:** Judith 0431 027 268

Bring in your completed Puzzles ~ Pick Up a new Jigsaw ...
FREE
 Minimum Jigsaw Puzzle size - 200 pieces
 All Jigsaw Puzzle Pieces must be secured in zip lock bag or similar and stored inside the Puzzle box
 Jigsaws should be in good condition with NO missing pieces

St Paul's Anglican Ladies Knitting Group

Sit "n" Knit

Tuesday 10.00 to 11.30am
Jindera Community Hub Library

Join us to knit for a charity or bring your own knitting project (if you can't knit we'll show you)

All Welcome

For more information phone 0400 424 437

Healthy Ageing Programs for Independence (HAPI)

HAPI MOVERS

📍 Jindera Community Hub

📞 Ruth Dunn - (02) 6026 3806

📅 Friday - 10am 💰 Gold coin

All you need is comfortable clothes, supportive shoes, a bottle of water, and your laughter.

For more info scan the QR code or visit www.activeandhealthy.nsw.gov.au to discover a group near you, or contact the Healthy Ageing team on 0409 781 326.

PESTS?

Spiders, Termites, Rodents,
Carpet Beetles, Ants, Fleas
Wasps or **WORSE?**

We Can Help!

- Domestic & Commercial Pest Control
- Timber Pest & Building Inspections
- Termite Treatments
- Thorough Written Reports
- Free, No-Obligation Quotes
- All work Guaranteed

www.piantospestcontrol.com.au

office@piantospestcontrol.com.au

VIC Lic No. L005632 | NSW Lic No. 5091710

Jindera, Burrumbuttock, Holbrook, Albury-Wodonga,
Corowa, Rutherglen, Wangaratta, Howlong,
& surrounding areas.

Pianto's
Pest Control

Pianto's
Pest Control

Phone: 02 6032 7137

(02) 6032 7137



The Good Neighbour
pet care solutions

Are you heading away and need care for your pets and property?

The Good Neighbour can help you!

Whether you're going away for 1 night or a few weeks
The Good Neighbour has you covered.

We look after animals of all sizes and have a special interest in caring for horses.

We provide peace of mind so you have the freedom to enjoy your holiday knowing your property and pets have been taken care of and loved in their own environment just as if you're still there.



For more information head to our website:
thegoodneighbour.com.au

Servicing Border communities since 2012.

Follow us on social media



Leanne de Hennin

0411 496 062

leanne@thegoodneighbour.com.au



Jindera Vet Clinic

Phone: 02 6026 3277 Email: clinic@jinderavet.com.au

Hours: Mon-Fri 8.30am-6pm
89 Urana Street, Jindera NSW 2642

Daryl Klein B.V.Sc.(Hons) Veterinary Surgeon
Brigit Pitman B.V.Sc.(Hons) Veterinary Surgeon

With the bonus of wonderful staff!



Quality Meat & Personal Service
- Bulk Meat Specials -

Brad & Tina Taylor
Shop 7, 87 Urana Rd,
Jindera, NSW 2642 **(02) 6026 1886**

Car enthusiasts, bargain shoppers and local families turn out in large numbers for the annual Morgan Country CAR CLUB - SWAP MEET and SHOW 'N' SHINE held at the Jindera Recreation Grounds on Sunday 29th March.



NEW HOMES | RENOVATIONS | EXTENSIONS



0401 552 942 | TRAVIS@TJBUILDING.COM.AU | LIC NO. 457875C



OPEN
Mon-Fri • 7.30am to 5pm
Sat 8am to 4pm

BARNEY'S RUBBLE

Sand & Soil • Mulch & Bark • Firewood
Pavers & Sleepers • FREE Trailer Hire
Pebbles & Rocks • Cement Products • Fertilisers
Prompt Delivery • Equipment Hire
OPERATING FOR OVER 35 YEARS

6025 1735 • 534 Urana Rd Lavington
www.barneysrubblealbury.com.au



ST PAUL'S
COLLEGE
WALLA WALLA, NSW

ENROLMENTS
OPEN FOR
YEAR 7-11
2026/2027



*Empowering students to embrace the future
with courage, confidence and creativity.*

Scan the QR code now
to receive more
information or call
02 6029 2200



Offering day & weekly boarding

www.stpaulscollege.nsw.edu.au



COUNTRY WOMEN'S ASSOCIATION
OF NEW SOUTH WALES



Fundraise to help
support various causes

Learn something new



Meet with others in
your community

Find your place at CWA

Your local branch:

JINDERA CWA

We usually meet on the first Wednesday of the Month
in the Jindera School of Arts Hall at 10am

The Jindera Branch Welcomes Visitors to our Meetings!

Search for a branch at www.cwaofnsw.org.au/branches



Jindera Village Post Office

For postal information and product specials

Bank with over 70 banks and financial institutions

Phone:
6026 3201



**Riverena Lutheran
YOUTH GROUP**
St John's School Hall, Jindera

**6.30PM
FRIDAYS**
May 1
May 15
May 29
June 12
Social Night - TBA

Register here:

email peter.reed@lca.org.au for more information
stlukesalbury.churchcenter.com/registrations/events/2796353

JINDERA COTTAGE CRAFT SHOP

Mother's Day Craft Stall

Saturday 9 May 2026
Outside Jindera IGA
Supermarket

Handmade gifts especially
created for Mum.

Jewellery, hand embroidered
& knitted items, candles, carry
bags, silk scarves, cards
and more.

**MOTHER'S
DAY
RAFFLE**
Raffle will be drawn
in the morning.

**KIDS
CHURCH**
at Saint John's School

6pm Fridays
May 8
May 22
June 5
June 19

**FREE
BBQ**

**ALL
WELCOME**

School Hall
154 Adams Street
Jindera

FOLLOW US
stjohnschapeljindera

**FAMILY
GAMES
CLUB**

Mondays 4-5pm

CARD GAMES

BOARD GAMES

FREE ENTRY

Drinks and snacks available for purchase
Feel free to come alone or bring your friends

For More Info, Contact:
peter.reed@stjls.nsw.edu.au



Jindera's solution to fuel prices and shortages!!!

Jindera COTTAGE CRAFT Group News

By Vivien Naimo

Running out of time to shop for *Mother's Day*

- ♥ Can't find a car park close to the shops?
- ♥ Too late to order online?
- ♥ The Jindera Cottage Craft Group can help!

We are holding a special **MOTHER'S DAY STALL** outside of Jindera IGA on **Saturday 9th of May from 8.30am to midday.**

We will have a wide range of home made items at very affordable prices.

There will be a **Raffle** - prize is a box of lovely items to pamper your special lady. - **Tickets 3 for \$5.**

We are located beside the Jindera Museum and open every **Sunday from 11am until 2 pm.**

Pop in and check out the range of Art & Craft items for that special person in your life.

Pictured below are just a few examples of the many gifts we have available to say, *"thank you Mum"*.


Find us on Facebook

<https://www.facebook.com/profile.php?>

If the **Flags are Flying** on the fence - **WE ARE OPEN!**






Committed to our region.



Justin CLANCY MP
MEMBER FOR ALBURY

Authorised by Justin Clancy. Funded using Parliamentary Entitlements. 02 6021 3042 | justinclancy.com.au





We are a social group creating a garden for EVERYONE to enjoy. Check latest news on our [Facebook](#) page. You can Phone or Message Lorraine (President) **Ph: 0419 984 887**

The Jindera Community Gardens are embracing the beauty of autumn, with vibrant changes transforming the space into a thriving hub of colour, growth, and community spirit.

As the seasons shift, the leaves are beginning to turn, creating a picturesque backdrop throughout the gardens. Recently planted grass is taking off at an impressive pace, filling the area with fresh greenery, while flowers are blooming in bursts of colour - clear signs of the care and dedication poured in by local volunteers.



Change is a constant at the gardens, and it's all made possible thanks to the ongoing efforts of the community. Volunteers continue to lend their time and energy, ensuring the space remains welcoming, productive, and ever-evolving.



Over the recent school holidays, the gardens became a place of discovery for local children, who stumbled upon a small but exciting surprise - a friendly frog nestled in the soil. The unexpected visitor quickly became a highlight, sparking curiosity and joy among young explorers.

The gardens are also seeing a steady stream of new faces, with more people stopping by to admire the space and inquire about getting involved.

One of the most exciting developments is the introduction of "your own" garden bed areas, giving community members the opportunity to cultivate their own patch and become part of the garden's ongoing story.

We had a wonderful visit by locals from Walla Walla Community Gardens who come out and gave us brilliant and interesting ideas with their wonderful experience and knowledge to help with the growing gardens.

Special Thanks goes out to Cheryl and Dot



Sunday 31st May 2026 @ 3pm
we hold our AGM all welcome
to attend @ The Gardens

Memberships are coming up for the financial year ahead please keep this in mind. **\$10**. Bank acct details are:
Name : Jindera Community Gardens
BSB: 640 000 - Acct # : 111 299 988



Mother Day is fast approaching - we will be holding our **annual cake and garden stall**. All donated goods greatly appreciated, keep a lookout for the signs of location during the week prior.



JINDERA HAIR HEALTH & BEAUTY

TEL: 0412 62 62 50

91 Urana Street, Jindera NSW 2642

EQUIP

OCCUPATIONAL THERAPY

Alison Viedt

0427 263 398

alison@equipoccupationaltherapy.com

MICK'S TREE HEIGHT REDUCTION & SHAPING SERVICES

SPECIALISING IN:

TREES - felling/lopping
/pruning & removal

**PRUNING &
STUMP GRINDING**
- hedges/bushes/shrubs
/roses & palm trees
(chipping available)

OTHER SERVICES -
gutter cleaning/
rubbish removal

**Special
Discounts
for
Pensioner
Services**

MICK: 0427 316 497

WALLA WALLA COMMUNITY MEN'S SHED INC

**TEA & COFFEE MORNINGS @
WALLA WALLA LIONS COTTAGE
45 COMMERCIAL STREET
MONDAY @ 10.00am EACH WEEK**



Gold Coin Donation

CONTACT

TED ACKERLEY MOBILE:0410594044

see your ad here

**1/4 page
12 x 9 cm**

**Contact Jindera News
for pricing and
more info.**

Email:

jinderanews@ruralcarelink.org.au



JINDERA FOOTBALL CLUB



The 2026 season for the Jindera Football Club kicked off with our **Family Fun Day** alongside the opening round clash against Holbrook; setting the tone for the season ahead - bringing people together both on and off the field. The atmosphere was welcoming, with families turning out in great numbers to be part of the celebrations. There was something for everyone, with children enjoying a variety of activities including **face painting**, a **petting zoo**, and **horse rides**—keeping smiles on faces throughout the day.

Round 3 marked a special occasion as the club took part in an **ANZAC Round** clash at Osborne. The day began with a moving ANZAC ceremony, where players, officials, and spectators came together to pay their respects before taking to the field. It was a proud moment for the club and our players to be part of such a meaningful tribute.



Behind the scenes, the hard work hasn't stopped. Our players and volunteers have been busily chopping wood, with trailer loads now cut and ready for sale. If you're interested in **purchasing firewood**, please reach out to our **Top Dog, Stax on 0427 829 029**.



A sincere thank you to Greater Hume Shire Council for their valued support in making the day such a success!

Round 2 saw the Bulldogs venture out to Howlong for a big day of football. With a later start to the schedule, our senior teams had the opportunity to take the **field under lights** - creating a great atmosphere and an exciting experience for players and supporters alike.

Our Under 11s netball team were invited to attend the ANA Carnival at JC King Park.

The girls had a fantastic day! The carnival provided a great opportunity to sharpen their skills and gain valuable match experience in a fun and supportive environment.

It was a positive start to the year, setting a strong foundation for the team as they head into the 2026 season.



Key Dates for your Calendar:

- * **Saturday, 2nd May** – Round 4 vs Henty @ Home
- * **Saturday, 16th May** – Round 6 vs Billabong Crows @ Home
Breast Cancer Awareness Day & Ferret Racing
- * **Saturday, 30th May** – Round 8 vs Murray Magpies @ Home
- * **Sunday, 31st May** – Pick-a-Box Event



More JFNC Family Fun Day - page 36

JFNC Family Fun Day - continued





M.E.G.A.S
Music Store

Megas Music Store
161 High Street Wodonga
02 6056 1044

LIKE US ON **facebook**

MusicAccessories.com.au
www.MegasMusic.com.au



Lester & Son
FUNERAL DIRECTORS

A tradition of personal, professional care since 1907



Albury	Wodonga
359 Wantigong St, North Albury	49 Thomas Mitchell Drive, Wodonga
02 6040 5066	02 6056 1700

www.lesterandson.com.au

All Hours | All Areas | Pre-paid Funerals



TerryWhite Chemmart

Jindera TerryWhite Chemmart Pharmacy

Shop 4&5, 82 Urana Street, Jindera, NSW 2642

OPEN
Monday-Friday: 9.00am to 5.30pm
Saturday: 9.00am to 12 noon

-- OFFERING --

- ◆ Health Risk Screening Services
- ◆ National Diabetes Services Scheme
- ◆ Webstar packing
- ◆ Spotcheck (Skin Cancer Screening Programme)
- ◆ Wide range of vitamins
- ◆ MedsCheck
- ◆ Free Blood Pressure Testing
- ◆ Baby Products
- ◆ Home Health Care Aids
- ◆ Giftware
- ◆ Natio Ski Care range
- ◆ Chemmarts Reward Programme

Phone (02) 6026 3271
Fax: (02) 6026 3935
Email: Jindera@chemmartpharmacy.com.au





CONWAY
PRINTING

"FOR ALL YOUR PRINTING REQUIREMENTS"

- Business Cards • Letterheads • Books • Raffle Tickets
- Complete in-house design service • All business stationery
- Invoice Books • Stickers • Brochures • Leaflets

(02) 6026 3611

Stitch and Chat Craft Group

This group meets on the first Wednesday afternoon of each month at **2.00pm** at the Jindera Hub.

All welcome, just bring whatever you are working on & come along for a chat and cuppa.

We usually finish around 3.30pm

Judy Gray
0418 617 385
for further information.



The Jindera Country Golf Club has been looking an absolute picture of green during the month of April. From the combination of recent rains, lots of time and work in improving the fairways and tee areas from our skilled and dedicated grounds crew - managed by Peter Penny and Graeme Moore, our new zero turn mower thanks to the generous donation from the Duus family all combining to make the course a pleasure to play on.

We have had ProSports contractors working at the club, funded by our local **Glenellen Solar farm grant** in upgrading our 5th/14th green, which had previously been affected by flood damage. Part of the work involved new packing of the soil under the green and re-setting the sand scrape cups. This has now settled and the hole is in full operation again.

As a result of the good work, we have also reset all remaining cups on all greens to have them flush with each green. Thanks to members **Robin Weldon, David Gray** and **Trevor Freeman** for their extensive work with his project.

Captain James Phelps has had all our red and blue tees rated for play by both men and women, which will allow us two sets of rated tees for each hole as well as to support correct handicapping for our junior players.

The club hosted the **Riverina Ladies** pennant with teams from Wagga Wagga city and country clubs, along with Thurgoona and Howlong players as part of a 5-week competition with each team playing off against the other teams. It was a perfect day, with challenging golf and excellent country hospitality. Many thanks to **Heather Chaston** for organizing the catering and her band of volunteers for making it such a successful day.

Matchplay competitions have commenced with 1v1 players competing in a knockout style draw. Good luck to the winners from round 1, progressing to the second round. Friday Chook runs have commenced with daylight savings time now from 3:00-3:30pm tee off time. Sunday competition will also change tee off time 11:30-12:00pm from **Sunday 3rd May**. Monday and Wednesday competitions tee off from 8:30am.

Social golfers are welcome at the course any time the course is open, and we have seen many new faces about the club with a high number of new members joining in the last two months. Social golfers can pay \$15-17 cash or card to play at the clubhouse door. Membership forms can be found at admin@jinderagolfclub.com where we have some golf carts and clubs available for hire, by arrangement.

Members are informed that the next **general meeting** is in the clubhouse on **Monday 4th May at 6:30pm**, all members are welcome to attend.

We are also seeking regular contributions of **volunteer** hours each week to support the work done by the grounds crew, please talk to any of the executive members if you have some time available to assist.

Memberships are currently due:
 \$150 for adults and \$35 juniors, payable by direct debit.
 Jindera Golf Club, BSB: 640 000 ACC: 111 096 047

Hope to see you out on the course.

SCORES SUMMARY - APRIL 2026

SUNDAY COMPETITION

SUN 29/03/2026 Monthly Medal - Stroke - 22 Players

Postn	Player	DLY Hcap	Gross	Nett	18-Hole Result	9-Hole Result FRONT
1	Brenten POLKING-HORNE	15	81	66	W, \$40	W, -2, \$20
2	Ashley PAECH	12	84	72	R/U, \$20	
3	Simon COSSOR	10	83	73	B	
4	Craig MCMILLAN	7	81	74	B	
5	John METCALF	10	85	75	B	
6	Peter YENSCH	16	91	75	B	
7	Peter PENNY	16	91	75	B	R/U, -1, 2B
8	Greg ALLEN	15	92	77	B	
9	Donald SINGLETON	31	109	78	B	

SUN 5/04/2026 Stableford - 10 Players

Postn	Player	DLY Hcap	Gross	Nett	18-Hole Result	9-Hole Result BACK
1	Ian PERTZEL	26	99	35	W, \$20	
2	Craig MCMILLAN	7	77	31	B	W, 17, \$10
3	Daryl KLEIN	22	92	28	B	
4	Aaron MELBOURNE	23	87	28	B	

SUN 12/04/2026 Stableford - 19 Players

Postn	Player	DLY Hcap	Gross	Nett	18-Hole Result	9-Hole Result FRONT
1	Ian PERTZEL	26	100	32	W, \$30	
2	Peter YENSCH	16	83	32	R/U \$10	
3	Wayne STYLES	21	75	32	B	RU, 17, 2B
4	David GRAY	24	100	30	B	
5	Simon COSSOR	10	86	30	B	
6	Kade STYLES	28	97	30	B	W, 18, \$20
7	Jeff DONNEY	22	78	27	B	

SUN 19/04/2026 PAR - 16 Players

Postn	Player	DLY Hcap	Gross	Nett	18 Hole Result	9 Hole Result BACK
1	Stuart MILLAR	22	91	+1	W, \$30	W, +1, \$20
2	Stephen BURGESS	32	104	+1	R/U \$10	
3	James PHELPS	25	87	0	B	
4	Jeff DONNEY	22	82	-3	B	RU, +1, 2B
5	David GRAY	24	98	-4	B	
6	Donald SINGLETON	32	57	-4	B	

CHOOK RUN - Friday afternoon - 9 Holes STABLEFORD

CHOOK RUN 27/03/2026 - Stableford - 26 Players

Postn	Player	Dly Hcap	Nett	Result FRONT
1	James PHELPS	13	23	W \$40
2	David GRAY	12	22	R/U \$20
3	Tim DAVENPORT	18	21	B
4	Alex PAECH	4	20	B
5	Robin WELDON	10	19	B
6	Cam BURT	8	19	B
7	Ky LIESCHKE	17	18	B
8	Brodie ARMSTRONG	17	18	B
9	Craig MCMILLAN	4	17	B
10	Peter YENSCH	8	17	B

CHOOK RUN 3/04/2026 - Stableford - 22 Players

Postn	Player	Dly Hcap	Nett	Result BACK
1	Aaron JENNINGS	12	19	W \$40
2	Kevin WALSH	14	19	R/U \$20
3	Ian PERTZEL	14	19	B
4	Marita CHRISTENSEN	20	18	B
5	Craig CHRISTENSEN	11	16	B
6	David GRAY	12	16	B
7	Neville BRAND	11	16	B
8	Tony CORRIN	8	15	B
9	Russell GUEHO	10	15	B



Some hopefuls setting out: Aaron, Greg, Peter



Equal winners Ian Perzel and Walter Paech with 18 points at Chook Run



A beautiful day for golf with Shannon, Smity and Donny



In the \$ Garry Spurr winning the front 9 & whole day with a cracking score of 44



Great to see Life member Donny Singleton on the course



More hopefuls: Craig, Nick and Aaron

CHOOK RUN 10/04/2026 - Stableford - 16 Players

Postn	Player	Dly Hcap	Nett	Result FRONT
1	Walter PAECH	16	18	W \$30
2	Ian PERTZEL	13	18	R/U \$10
3	Simon COSSOR	5	16	B
4	Bruce HILL	11	16	B
5	Neville BRAND	10	15	B
6	Matt KLINGSPORN	12	15	B

CHOOK RUN 17/04/2026 - Stableford - 27 Players

Postn	Player	Dly Hcap	Nett	Result BACK
1	Mark JONES	16	22	W \$40
2	John WIESNER	16	18	R/U \$20

VETS COMPETITION – Wednesday morning – 9 Holes.

VETS 1/04/2026 Stableford - 19 Players

Postn	Player	Dly Hcap	Nett	Result FRONT
1	Steve BURGESS	26	19	W
2	Frank SHANNON	18	19	RU
3	Dave CASTLES	14	18	
4	Dave WEBB	18	14	
5	Tom McGRATH	20	14	

VETS 8/04/2026 Stableford - 20 Players

Postn	Player	Dly Hcap	Nett	Result FRONT
1	T HEWETT	36	20	W
2	Bruce HILL	18	16	RU
3	Steve BURGESS	26	16	
4	Dave CASTLES	14	15	
5	Tom McGRATH	20	15	

VETS 15/04/2026 Stableford - 23 Players

Postn	Player	Dly Hcap	Nett	Result BACK
1	Bruce HILL	18	18	W
2	Daryl RIXON	18	17	RU
3	Nev WINTER	20	17	
4	Tony DUUS	22	16	
5	Dave CASTLES	14	16	

Follow us on Facebook or our website at



www.jinderagolfclub.com

LADIES - Monday Morning – 9 Holes

LADIES 23/03/2026 - Birdie Dash - 9 Hole Stableford - 3 Club Event

Postn	Player	Dly Hcap	Nett	Result FRONT
1	Leanne QUINN	30	17	W
2	Joan JAMISON	24	14	RU
3	Heather CHASTON	18	14	
4	Helene WALKER	30	12	
5	Judy ARENDARCIKAS	30	10	
6	Catherine CRAZE	30	8	

LADIES 30/03/2026 - Birdie Dash - 9 Hole Stableford

Postn	Player	Dly Hcap	Nett	Result
1	Leanne QUINN	29	16	W
2	Joan JAMISON	24	15	RU
3	Judy ARENDARCIKAS	29	12	
4	Marita CHRISTENSEN	20	9	
5	Catherine CRAZE	29	7	

LADIES - 6/04/2026 – No Games

LADIES 13/04/2026 - Birdie Dash – 9-Hole Stableford

Postn	Player	Dly Hcap	Nett	Result BACK
1	Joan JAMISON	24	19	W
2	Leanne QUINN	29	18	RU
3	Heather CHASTON	18	14	
4	Marita CHRISTENSEN	20	12	
5	Judy ARENDARCIKAS	29	12	
6	Catherine CRAZE	29	7	
7	Sonia STAPLES	29	6	



Do you know a local with an interesting story?

Jindera News want to hear from you

Email: jinderanews@ruralcarelink.org.au

Jindera



Trading Hours

Mon – Fri 7:30am-7:00pm

Sat & Sun 8:00am-7:00pm

Find us on  to see our
great specials, new lines
recipes and loads more!