

THE JINDERERA NEWS

FREE - local Newspaper distributed by the first Saturday of each month (except January) published by:-

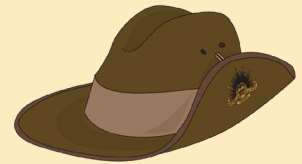


Rural CareLink - a Jindera based not-for-profit local Charity Organisation.

ANZAC DAY



25th April



Dawn Service commences at 5:45am

This will be followed by a 'gunfire' Breakfast supplied by Jindera Rural Fire Brigade and served at the Fire Station.

Commemorative Service commences at 10:30am

This will be followed by a Morning Tea supplied by the Jindera CWA at the School of Arts Hall.

The Anzac Day Services will be held on **SATURDAY 25th April 2026 at the Jindera Memorial Park** corner of Dight & Urana Streets, Jindera.

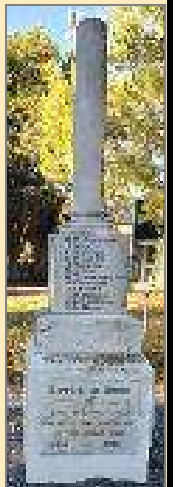
Wreath laying is encouraged!

DONATIONS will be requested for both the Breakfast & the Morning Tea.

Lest we forget



Supported by Rural Care Link



Jindera Community

GARAGE SALE

Sunday 19th April 2026

**CLEAN OUT
and
CASH IN!**

See Rural Care Link website
www.ruralcarelink.org.au/

Registered Sites must be
located within Jindera



**Registrations
CLOSE
April 13th!**



Headlines and Happenings

By Lizzie Pogson. (Secretary, RCL).

New Member Welcome:

We are pleased to welcome one new member over the past month. This person has been a staunch co-contributor for many years in joint community service in our local area and it's terrific to formalise our relationship.



“Magnolia Holistic Wellbeing”:

We were very pleased to welcome Catherine Hebblewhite along to our recent Committee Meeting to hear how her business might align with RCL’s Community Assist Programme. We are happy to form a new Community Engagement Partnership, where we see the opportunity for mutual benefit to flow for clients, from time to time, with very generous cost-effective counselling, in Jindera.



MAGNOLIA
HOLISTIC WELLBEING

Privacy and Information Collection Policies: With the excellent advice from our Pro Bono lawyers, we are tailoring our policies to the requirements that are relevant to RCL, and that we are providing security to our Members, whose information collected is treated with our highest priority.

For general **RCL** (Rural Care Link) **Enquiries** including Volunteering, Hardship, Personal Assistance and **Community Assist**.
Please call the RCL Office
0475 594 073

Jindera News Contributions

Please Note: The editorial team reserves the right not to publish submissions or to modify the presentation of any item to suit the style of the publication. All items published are understood to be the responsibility of the contributor.

Advertising Rates - 2026

Per Edition:	Full page	\$100.00
	1/2 page	\$60.00
	1/3 page	\$50.00
	1/4 page	\$40.00
	1/8 page	\$30.00 (Bus. Card size)

Discounts Apply for consecutive advertisements

Also available: Colour advertising ♦ Single page inserts

FREE digital colour editions of this publication are available by email subscription.

For more information or to request digital editions

Email us at jinderanews@ruralcarelink.org.au

Jindera News - **NOW ONLINE!!!**

You'll have seen our new signs on the newspaper distribution baskets ... **bright yellow with a QR Code to scan**. This will take you to our website where there will now be a link to the current Jindera News, as well as past editions. OR... follow the email link to subscribe.

We are encouraging this option to help put a cap on costs, and to avoid increased advertising costs for our loyal advertisers. After noting with larger and **EVEN MORE** informative ... (*how is that possible, I hear you ask??*) - sometimes 52-page editions!!!

With the online version, you get the full colour experience, you can forward it on to other family and friends, and we are being more sustainable for the environment. Keeping cost-neutral is a financial goal as part of our fiduciary responsibilities, allowing us to put more money into supporting our community members. Scan the **QR code** (*right*) to our website to view online.



Carer Support Group News

By Vickie Priscina. (Carer Group Co Ordinator, RCL).

The following item by full time carer, Nicole Jen.

“Attending the Carer Network is important for me as a fulltime carer for my elderly parents. It's valuable to chat with other carers who 'get it', we can laugh with, and who understands the daily challenges and joys. Vicki introduces us to a useful resource or person to inspire us, which further equip us on our carer journey.

An added bonus - it's always great to meet for coffee with friends! We are lucky to have such a group in our rural community, thanks to the Rural Care Link Volunteers we get to enjoy some respite and self-care”.



Nicole Jen with her mum, Hillary Briese

OP SHOP News

By Jason McKenzie (Op Shop Coordinator, RCL)

Op Shop storage:

In the ongoing quest of best practice, and to try and tackle those times of overload in donations, or when bags of potential goodies are waiting for sorting, our Co-ordinator, Jason has sourced a sturdy caged trolley which is not only multi-storeyed but will be multifunctional as well.



Our 'Pass Over Bin':

It's been terrific to have conversations with "George" who takes the clothing in our Pass Over Bin, clarifying that clothing goes to international destinations and that other enterprise businesses providing employment opportunities. In these times of cost of living and particularly now, in the fuel crisis, RCL was happy to offer George a tank of fuel to keep him on the road. It was terrific to assist him to continue on his journey, confident he would have enough fuel to get him to his destination.

Fuel Apps Help:

We are all feeling the pinch at the bowser at the moment. For those looking to keep an eye on fuel prices the Petrol Spy App is an excellent resource and can be downloaded to your phone or viewed on their website, www.fuelspy.com.au also the NSW Government run Fuel Check App and website www.fuelcheck.nsw.gov.au



Op Shop Big SALE:

The Op Shop will be having a BIG SALE (see details at right) from the 7th April to 11th April.

Come on in and grab a bargain!



Carers Support Group

We *usually* meet monthly on the
3rd Tuesday of each month

Please call **Vickie - 0428 406060**

for **venue** and **dates** of these meetings.

Peer support, respite & information sharing
is the focus of the Carer Group.

For more information call

Vickie Priscina - Carer Group Co-Ordinator
on **0428 406 060**

Op Shop ONLY enquiries (02) 6026 3001

This is the dedicated Op Shop number and therefore, if you need assistance outside of trading hours, please use the RCL office number 0475 594073.

Op Shop Trading Hours:

Tues - Fri 10am to 4pm (closed for lunch 1pm to 1.45pm)

Saturdays - 10am to 1pm

83 Urana Street, Jindera NSW

[Op Shop Facebook](#) - please click on this link

Rural CareLink inc.

OP SHOP



The Rural Care Link OP SHOP
is having a big sale from
Tuesday 7th to Saturday 11th April

ALL CLOTHING

JUST 50 Cents per ITEM

OR 3 ITEMS for \$1

REMINDER

Rural Care Link AGM
Sunday 12 April 2026

from 2pm

Jindera Council Hub

All members welcome!

DEFIBRILLATOR'S in Jindera

TWO Defibrillators are available **24 Hours a Day**

★ **Jindera Hub Building**

★ **Jindera Country Golf Club** easy to access from carpark

Other Defibrillators are available during the follow
Jindera Facilities **Open Hours**

★ Jindera Pre-School

★ Football Club

★ Swimming Pool

★ Tennis Club

★ Fire Brigade

★ Anglers' Club

★ Jindera Medical Centre

★ Jindera Public School

★ St. Johns School



*In case of EMERGENCIES please
familiarise yourself with these above locations.*

Jindera Community Diary

APRIL 2026

SUNDAY	MONDAY	TUESDAY	WEDNESDAY	THURSDAY	FRIDAY	SATURDAY
			<p>1 Jindera Golf Club Vets – 8.30am Stitch & Chat Craft Group - Jindera Hub 2.00 - 3.30pm Playgroup Jindera Community Hub 9.30-11.30am</p>	<p>2 Jindera Golf Club - Ladies Comp 18 Hole 11.30am</p>	<p>3 </p>	<p>4 </p>
<p>5 Jindera Museum Tearooms from 11am Jindera Craft Shop – 11.00am - 2.00pm Jindera Golf Club - MENS & LADIES Comp 8.30am Jindera Blokes Walk – Jindera Oval - 7.45am</p>	<p>6 Jindera Golf Club - Ladies Comp 9 Hole 8.30am</p> 	<p>7 Morgan Country CAR CLUB BBQ precedes 7.00pm meeting - Club House - Jindera Rec. Reserve Sit "n" Knit Ladies Knitting Group Jindera Hub Library 10.00am -12.00pm</p>	<p>8 Jindera Golf Club Vets – 8.30am</p>	<p>9 Jindera Golf Club - Ladies Comp 18 Hole 11.30am</p>	<p>10 Gentle Exercise Class Jindera Hub – 10.00am Jindera Golf Club Chook Run – 3.00pm Jindera Anglers Club Club House, Jindera Reserve - 5.30pm</p> 	<p>11 JFNC Bulldogs FAMILY FUN DAY Footy Rec. Reserve</p>
<p>12 Rural Care Link AGM - Community Hub 2.00pm Jindera Museum Tearooms from 11am Jindera Craft Shop – 11.00am - 2.00pm Jindera Golf Club - MENS & LADIES Comp 8.30am Jindera Blokes Walk – Jindera Oval - 7.45am Community Gardens Meeting - 3pm</p>	<p>13 Jindera Golf Club - Ladies Comp 9 Hole 8.30am</p> 	<p>14 Mythical Paper Fidgets School Holiday Craft Jindera Library 11.00am Community Hub Jindera Child & Family HEALTH CLINIC Jindera Community Hub Phone: 6025 4822 Sit "n" Knit Ladies Knitting Group Jindera Hub Library 10.00am -12.00pm</p>	<p>15 Jindera Golf Club Vets – 8.30am</p> 	<p>16 Jindera Golf Club - Ladies Comp 18 Hole 11..30am</p>	<p>17 Jindera Golf Club Chook Run – 3.00pm Gentle Exercise Class Jindera Hub – 10.00am Jindera Anglers Club Club House, Jindera Reserve 5.30pm</p>	<p>18</p>
<p>19 Jindera Community GARAGE SALE</p> <p>JMPH Committee CAKE STALL Post Office - 8.00am Jindera Museum - Tearooms from 11am Jindera Craft Shop – 9.00am - 2.00pm Jindera Golf Club - MENS & LADIES Comp 8.30am Jindera Blokes Walk – Jindera Oval - 7.45am</p>	<p>20 Jindera Golf Club - Ladies Comp 9 Hole 8.30am</p> 	<p>21 Storytime Jindera Library 11.00am Community Hub Community Forum Meeting - Community Hub - 7.30pm Sit "n" Knit Ladies Knitting Group Jindera Hub Library 10.00am -12.00pm Friends at the Library Space for Adults Community Hub - 2pm</p>	<p>22 Playgroup Jindera Community Hub 9.30-11.30am Jindera Golf Club Vets – 8.30am</p> 	<p>23 Jindera Golf Club - Ladies Comp 18 Hole 11..30am</p>	<p>24 Gentle Exercise Class Jindera Hub – 10.00am Jindera Golf Club Chook Run – 3.00pm Jindera Anglers Club Club House, Jindera Reserve - 5.30pm</p>	<p>25 ANZAC DAY</p> 
<p>26 Jindera Craft Shop – 11.00am - 2.00pm Jindera Golf Club - MENS & LADIES Comp 8.30am Jindera Blokes Walk – Jindera Oval - 7.45am</p>	<p>27 Jindera Golf Club - Ladies Comp 9 Hole 8.30am</p>	<p>28 Sit "n" Knit Ladies Knitting Group Jindera Hub Library 10.00am -12.00pm</p>	<p>29 Playgroup Jindera Community Hub 9.30-11.30am Jindera Golf Club Vets – 8.30am</p>	<p>30 Jindera Golf Club - Ladies Comp 18 Hole 11..30am</p> 		

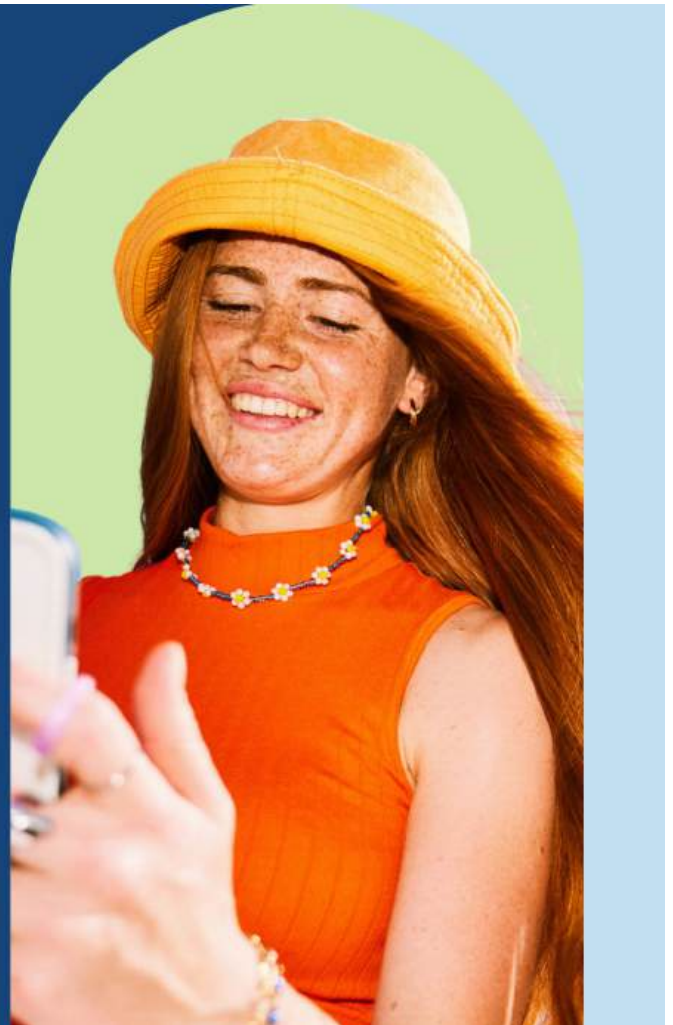
Do you have an event you would like added to the Jindera Community Diary
CONTACT US ON: jinderanews@ruralcarelink.org.au



**YOU DO THE
5% DEPOSIT.
WE'LL DO
THE REST.**

Visit humbank.com.au/firsthomebuyers

*Australian Government 5% Deposit Scheme eligibility criteria apply.
Hume Bank Limited ABN 85 051 868 556 AFSL and Australian Credit Licence No. 244248



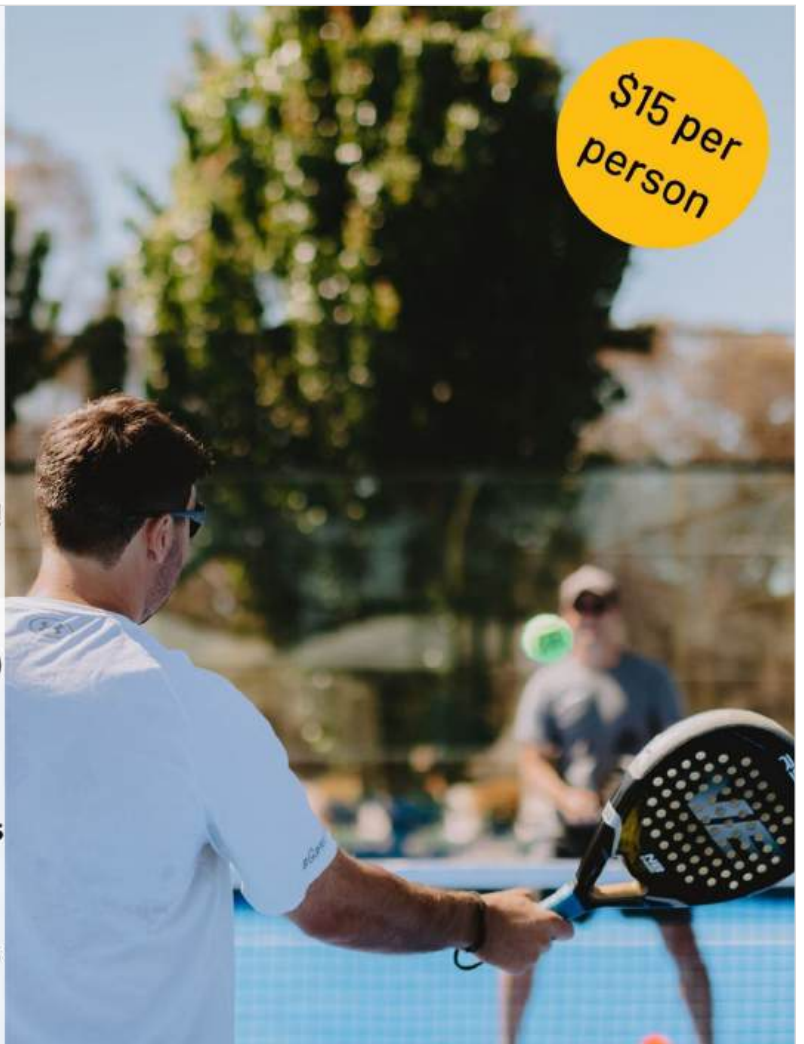
SERVING UP THE FUN

HAVE YOU TRIED PADEL?

Padel is an exciting new sport to Australia!
Easy to learn and fun for all ages!

Book a court - 0498 797 290
Open 7 days a week

Licensed bar - great cocktails and beers
Great for parties or family groups
Team building or a corporate events
Ask about our burger + padel packages
THURGOONA - next to the Golf Club





Contact Rachel: 0407 122 732
rachel@flowermilljindera.com.au



Book an appointment to visit our studio or find our fresh flowers daily at the Next Level Café in Jindera
www.flowermilljindera.com.au



Anglican Parish of Northern Albury

Where Faith Makes a Home

St. Paul's Jindera

Sundays 9.30 am

Rev'd Cathy Carden - Mobile: 0412 592 672
cathycarden21@bigpond.com

Rev'd Rex Everett - Mobile: 0427 861 130
rex.everett@bigpond.com

Parish office : 6040 6457

website: [https:// anglicannorthernalbury.org.au](https://anglicannorthernalbury.org.au)

St Mary's Catholic Church Urana Road Jindera

02 6025 1784

email:

lavington@wagga.catholic.org.au

website: holyspiritlavington.org.au

Parish Priest: Fr. S Byrnes

Assistant Priest: Fr. M Perry

Mass Times: 9am - Sunday
7am - Mon & Tues
8.30am - Wed & Thur
9.15am - Friday
8am - Saturday

Confessions before Mass

Baptisms and Weddings
by Appointment



BURRUMBUTTOCK
LUTHERAN PARISH



Growing Where We are Planted

Sunday Worship Service Times

Bethlehem Jindera 9am

Adams Street, Jindera

Trinity Bethel, Holy Cross Burrumbuttock and St Peter's Gerogery: please check our website for worship times

<https://burrumbuttock-parish.lutheran.org.au>

Contact: David Schmidt 0427 200 035

You're welcome at

Lavington Baptist Church

Youth Group- 13 years +
7:30 - 9:30pm

Good News Club 9 -12 years
6 - 7:30pm

Sparks 4 - 8 yrs
6 - 7:30pm

LAVINGTON BAPTIST CHURCH

www.lavingtonbaptistchurch.com

Friday Nights during school terms
450 Parnall St, Lavington
TEL: (02) 60 215880


Gateway

LIFE CHURCH

SUNDAYS

10am (AU) & 12:30pm (AF)

Where: Corner Union Road & 1108 Corella Street, North Albury

ALL WELCOME!   

AROUND THE TOWN

UPDATE

with
Jenny O'Neill

Car Club holds Swap Meet

Jindera was a hive of activity with the annual **Morgan Country Car Club Swap Meet**. It was well timed with the rain falling earlier to make the Rec. Reserve grounds look welcoming. The event was the most successful that I have seen over the years and the crowds stayed around longer. I am always amazed by the miraculous cleanup at the end of the afternoon so that you would never realise what had taken place. The town looks wonderful after the momentous effort put in by Council's Parks and Gardens crew. Don't we all know how quickly the grass is growing.



Museum Recent Events

Lots of visitors came out to enjoy the recently held **Museum High Tea**.

The new massive **Historic Mural** on Dight Street which has now been unveiled, is a great local attraction (*see page 10*).



Friends of the Jindera War Memorial Update

'*Friends of the Memorial*' Work on the **War Memorial** itself will start after Easter. A working bee will be held on Easter Monday to clean up the surrounds of the memorial. It will be exciting seeing new park furniture in the area which will be used for the **ANZAC Day services**. A special commemorative seat has been donated by **Greg Rooney**, an ex-serviceman and local resident, and the **Recreation Reserve Committee**. Stage 2 will involve planning for the whole surrounds. Anyone who is keen to give suggestions for landscaping are very welcome to **contact** myself Ph: **0438 263417**



Local Council Works

The **Molkentin Road** (Cade Court to Urana Street) kerb and channel and footpath project is nearing completion.

Council has been working on the **Rec. Reserve** main entrance **road drainage** and heavy patching which is just in time for the Football/Netball season.

Jindera Playground Petition

People have been asking when the **parking area** at the Adventure Playground will be tidied up with comments being made such as '*it's a real eyesore*', '*the parking spaces need to be increased*', '*the potholes need fixing*', '*it's a real untidy mess*'. When the remaining trees (not including the lemon scented gum) are removed, then that will allow an extra 20 parking spaces, the footpath will be cemented and work on the carpark itself will occur.



There will be a petition available at local venues over the next two weeks.

Special Meeting - e-Bikes/e-Scooters

It was interesting hearing from Chief Inspector Huggett at the special Forum meeting (*see page 8*) who had some valuable comments to make which included "*Personal e-scooters remain illegal on NSW roads and road-related areas, including footpaths, shared paths and bicycle lanes. You can only use these on private property.*"



Friends in Action (Caritas) Diary: 2026

A Group that can offer emotional and spiritual support and opportunity for growth through caring and personal relationships.

3rd April
5th April
8th April

Good Friday.
Easter Sunday.

Browsing in Beechworth:

M/tea: 10am The Beechworth Conservatory. (9 Bridge Road, Beechworth).
Conservatory has plants for sale too.

Lunch: 1pm Last St Brewery (29 Last St, Beechworth).

Depart: St Paul's - 9.00am

Contact: **Roz Phillipson 0417 457 122**

Friendship in Action

JINDERA COMMUNITY FORUM

Next Meeting is at the Jindera Community Hub (entry via rear carpark) ON

Tuesday 21st APRIL 2026

at 7:30pm

Items for the agenda are welcome by emailing jinderacommunityforum@gmail.com



Come and join a group of locals who are interested in our community and its people, and who would like to help improve the facilities our community offers to both visitors and residents alike.

At a special Forum meeting on March 24, the attendees were addressed by a Chief Inspector of Police on a series of questions/issues which were pre-submitted for discussion. This meeting was not a community meeting as preferred and was held in accordance with the instruction from the Police Dept.

The main points of discussion were:

e-Bikes/e-Scooters - We have problems with **speeding, no helmets, tandem/triple riding and playing chicken** with road users. The answer being that e-Bikes have requirements for size of motor (after which they become motorbikes requiring licenses, registration, etc) and e-Scooters are illegal in NSW other than on private land as per the statement below which can be found at <https://www.transport.nsw.gov.au/roadsafety/road-users/e-scooters> .

“Personal e-scooters remain ILLEGAL on NSW roads and road-related areas, including footpaths, shared paths and bicycle lanes. You can only use these on private property.”

Jindera Break-ins /Theft /Car Theft - The recent business break-ins have **not been solved** nor goods recovered despite security footage. The general theft is opportunistic usually due to unlocked houses, vehicles and toolboxes on vehicles, with the emphasis on being vigilant about locking our property and closing windows. A recent stolen vehicle was recovered, but perpetrators are unknown.

Reporting to Police - Residents are encouraged to report issues via the online NSW Police Community Portal or by phoning **131 444**. Phoning Albury Police Station is not always answered due to work load—an important part to reporting being to persist in calling, to obtain the name of the police officer taking the report and to obtain an incident number for further enquiry. A major part of reporting is that individuals are permitted to take photos and videos of offenders and offending whilst in a public place.

An interesting quote for the evening was - **“Community gets the crime that community condones”**.

At the **APRIL FORUM** meeting, Greg Blackie (Greater Hume Council Engineer) will be speaking about budgeted future works around Jindera.

If anyone has any issues they would like to raise with Greg in relation to works and developments please advise the Forum by April 14 so we can forward the issue to Greg for addressing at the meeting.

Jindera residents are welcome to attend the April 21 meeting at the Hub.

For more information contact:

jinderacommunityforum@gmail.com or phone Kathy Anderson on 0407 357 082.

FREE JIGSAW PUZZLE EXCHANGE

- ◆ Where: Jindera Next Level Café - dining area
- ◆ When: Cafe Open Hours
- ◆ Why: Access to a range of Jigsaw Puzzles
- ◆ Who: Judith 0431 027 268

Bring in your completed Puzzles ~ Pick Up a new Jigsaw ... **FREE**

Minimum Jigsaw Puzzle size - 200 pieces

All Jigsaw Puzzle Pieces must be secured in zip lock bag or similar and stored inside the Puzzle box

Jigsaws should be in good condition with **NO** missing pieces



Your People Working Well

2026 Training Schedule

JANUARY

21 & 22 MHFA
(ONLINE)

FEBRUARY

17 RFAST

MARCH

4 & 5 RFA
17 MHFAR
24 & 25 HART

APRIL

14 & 15 MHFA
23 PRE
30 RFAR

MAY

5 HSRR
12 RFAST

JUNE

2, 9, 16, 23, &
30 HSR
11 & 12 RFA

JULY

8 & 9 MHFA
15 & 16 HART

AUGUST

6 MHFAR
11 PRE
20 & 21 RFA

SEPTEMBER

3 RFAST
8 HSRR

OCTOBER

13 PRE
21 & 22 MHFA

NOVEMBER

3 MHFAR
10 RFAR
18 & 19 RFA
25 & 26 HART

DECEMBER

WWW.BLMC.COM.AU

- RFA** Resilience First Aid
- HSR** Health & Safety Representative
- MHFAR** Mental Health First Aid Refresher
- RFAR** Resilience First Aid Refresher
- HSRR** Health & Safety Representative Refresher
- HART** High Adversity Resilience Training
- RFAST** Resilience First Aid Starter Training
- MHFA** Mental Health First Aid
- PRE** Personal Resilience Essentials

Booking office@blmc.com.au

Jindera's Historic Street Mural Opening



The huge historic mural on the wall of the Jindera Pioneer Museum's Dight Street shed was officially 'Opened' on Sunday 15th March, with a small gathering of locals and members attending.

Kristina, our talented artist enlightened us briefly about the process of the painting and **Justin Clancy**, our local NSW member, spoke with great fondness of the museum, the history of the local area and the importance of this history to our community and social wellbeing.

The mural depicts the early period of the town's history, from the arrival of the **out-riders** for **John Dight**, the squatter that took up the land on which Jindera sits, and many hundreds of acres surrounding the township. It shows the first camp of the German migrants who travelled across from South Australia with their wagons and possessions.

The Jindera Hotel, as the main business of the township for many years occupies an important place in the art work. **P. C. Wagner**, the entrepreneurial spirit who contributed a great deal to the Jindera township, built Wagner's store with his partner and father-in-law **John Rosler**, and encouraged and assisted many of the local businesses to open, has pride of place in the mural.

It has been amazing to watch the scenes unfold and the detail emerge, along with the colour and vibrancy. There are many other characters depicted in the work, taken from photographs of the Jindera community in that evolving period of the town. We believe this adds a new and interesting visual for the Jindera streetscape.

We are planning additional works, when money can be found to support these artistic contributions.



AGnVET

Real Estate



ADRIAN
O'BRIEN



ROBYN
ARMSTRONG



NICOLA
PAYNE

BUY | SELL
Rural | Residential | Property Management

Henty, Culcairn, Walla Walla, Yerong Creek,
Holbrook, The Rock, Jindera, Rand, Lockhart,
Albury and anywhere in between

propertyhenty@agnvet.com.au | 02 6929 3102

JINDERA

PIONEER MUSEUM

PRESENTS

A RETRO WEDDING BREAKFAST
SATURDAY 2ND MAY; 6PM TILL LATE
JINDERA SCHOOL OF ARTS HALL



You are invited to join us for a wedding experience — step back to an era when a wedding was the talk of the town.

Set in the iconic Jindera School of Arts Hall, with a wedding 'Breakfast' (feast) reminiscent of the time, and old time dancing to see the night out.

DANCE CLASSES FRIDAY 24TH APRIL

7-9 PM JINDERA SCHOOL OF ARTS HALL

to get you in step for the big night.

Tickets for the Wedding and Dance Classes via Trybooking

If you attend the dance classes, you will receive a discount for your ticket to the wedding breakfast

JINDERA

STORAGE

STORAGE SHEDS NOW AVAILABLE
Offered in Different Sizes



Accessible and Easy to Find
Situated on Stockwell Road in
the Jindera Industrial Estate

Ideal for Furniture, Vehicles,
Office & Business Records, etc.

Contact Ian Ritchie Real Estate on 02 6025 9260

Easter School Holiday Program – *Mythical Creatures*

Bring a little magic to the school holidays with our **FREE** Mythical Paper Fidgets Workshop! In this hands on session, children will cut, fold and decorate their own colourful creations, including:



- ★ A bright unicorn that can hang and gently spin.
- ★ A springy, concertina style Chinese dragon that bounces with movement.



It's a fun session where kids can make something unique to take home! (see advert page 13).

Where: Jindera Library at the Community Hub **When:** Tuesday 14 April - 11am
Bookings essential: 02 6036 0100 **For Ages:** 5+

'Friends at the Library' – New Monthly Program

Looking at a simple way to connect with others in the community?

Friends at the Library (see advert page 13) is a relaxed monthly gathering where you can enjoy a game of cards, try some mindfulness colouring, work on a puzzle, or simply sit and chat. There's **no need to book**, just drop in and stay for as long or as little as you like.

It's a very welcoming space designed to bring people together, especially in smaller communities where it can be hard to meet new people.

Once a month, each of our Greater Hume libraries, Culcairn, Henty, Holbrook, and **Jindera** will open a space for adults in the community to meet new people, share a laugh, and enjoy some simple activities.

Whether you come along to play, create, or just connect, Friends at the Library is a great way to spend some time and meet new faces in your local community.

As the program grows, we hope to expand to include some simple craft sessions, guest speakers, and activities shaped by community interest.



Where: Jindera Library at the Community Hub

When: Third Tuesday of each month at 2pm

Come along and be part of a friendly, easy going catch up!

Celebrating Our Libraries – State Library of NSW

Holbrook and **Jindera** Libraries are proud to be featured in the State Library of NSW's "*Snapshot in Time*" 200-year anniversary project.

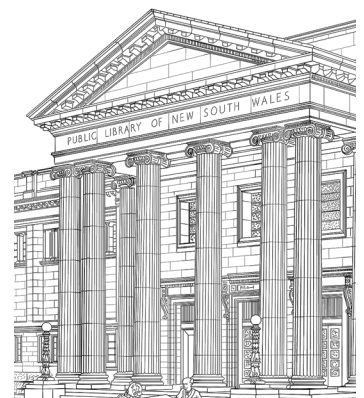
This special collection captures the stories and experiences of library users across NSW, highlighting the important role libraries play in people's lives, past and present.

It celebrates libraries not just as places to borrow books, but as spaces for earning, connection, creativity and community.

The inclusion of Holbrook and Jindera reflects the strong role our local libraries play in bringing people together and supporting our communities every day.



You can explore the collection here: <https://collection.sl.nsw.gov.au/record/16APQpOn>



Friends at the Library

Roll, Relax, & Reconnect



Your local library invites you to join Friends at the Library each month, a space for adults to play board games, enjoy some colouring/crafts, and meet new people.

Come along on your own or bring a friend; there's always a seat at the table.

No bookings required



Commencing:
 Culcairn Library - Friday 17th April at 10am
 Henty Library - Monday 13th April at 10am
 Jindera Library - Tuesday 21st April at 2pm
 Holbrook Library - Friday 10th April at 10am

BOARD GAMES



Greater Hume Council

MYTHICAL PAPER FIDGETS

FREE

CREATE YOUR OWN MYTHICAL PAPER FIDGETS
 INSPIRED BY DRAGONS AND UNICORNS
 CUT, GLUE, DECORATE, AND FIDGET AWAY
 FOR AGES 5 YEARS +
BOOKING ESSENTIAL - CALL 02 6036 0100



JINDERA LIBRARY : 14TH APRIL 2026 11:00AM
CULCAIRN LIBRARY: 15TH APRIL 2026 10:30AM
HOLBROOK LIBRARY: 16TH APRIL 2026 2:00PM
HENTY LIBRARY: 17TH APRIL 2026 1:30PM

riverina regional library

Greater Hume Council

JINDERA LIBRARY STORYTIME



11am
 Every third Tuesday of the month in 2026

FREE

We welcome you & your children, 0-5 years of age, to join us for stories, singing, movement, craft & so much fun!

riverina regional library

Greater Hume Council

JINDERA CHILD AND FAMILY HEALTH CLINIC

JINDERA COMMUNITY HUB
 83 Urana Street, Jindera

Every 2ND TUESDAY of the Month



NEXT CLINIC - Tuesday 14th APRIL

To make an **APPOINTMENT** or for more **INFORMATION** please call Ross Circuit Child and Family Health on **6025 4822**

Albury Wodonga Health

JINDERA

• PIONEER MUSEUM •

The wonderful rain events over the last couple of weeks have brightened the garden and certainly encouraged the grass to grow. Mark has been on the mower every week, and he has been coaching the garden, and provided new plantings, so that we have a spectacular display for our High Tea.

Annual General Meeting

March is the month the museum holds its Annual General Meeting (AGM). This is a requirement of the Incorporation Act and our constitution. This meeting provides for the election of office bearers and other specific processes relating to the running of the museum, its constitution, its land and assets. This year the AGM looked specifically at a change to its constitution to allow for a new category of membership entitled, Friends of the Museum.

This category has been provided for those interested who would like to support the museum financially on an ongoing basis, but who are unable to set aside time to volunteer. This is a very supportive way to be involved in the museum, as there are always limited finances available in the world of small regional museums. Having members who see this as an important contribution to the community and history of Jindera and district, is a real blessing.

At the AGM, all executive members were reinstated, and we were also pleased to welcome Carol Grylls to the Executive committee, in her role as one of our finance officers. The meeting also recognised the boundary adjustments at the blacksmith precinct, and the consolidation of titles at the main museum site. A new site plan is now complete, showing the new addition and some proposed additions for the future.

Men's Shed

New signage indicating the home of the Jindera Men's Shed has been erected on the **Tim Fischer Shed** facing Dight St.



This now provides a more visible perspective for the gathering, as this is the entrance that is used on a Wednesday morning when the group meet. Anyone is **welcome** to come along and see if the group is a good fit for them. Having the Men's Shed is a great bonus for the museum, as it

provides opportunities for maintenance works to be carried out on motors and machines, and some of the facilities. It also provides some direction for those involved.

Timber panelling has been erected in the new shed on Dight St to allow an extensive collection of horse harness and other accessories to be displayed. There has been discussion on additional displays for the new shed, and we will need to come up with a name for it soon.

Functions and Events

We have been pleased to host a number of private functions this month, while the weather has been so pleasant. The garden setting is always delightful for entertaining during this month of Autumn and several parties have taken advantage of this.

Our first **Easter Egg Workshop** was held on the weekend prior to Easter, with much fun had by the families that attended. Some truly lovely creations were made and many expressed it was a delightful way to prepare for Easter, rather than just buy a ready-made egg or gift, particularly given the increase in costs (*see more page 15*).

Our **Autumn High Tea** was also celebrated on this same weekend, and although the weather has cooled, the afternoon was delightful and all expressed how enjoyable the event is in so many aspects. It is a real pleasure to be able to provide such a nostalgic event, use the wonderful period crockery and silverware we have, and provide an experience that is unique (*see more page 15*).

Next month, on the **2nd May**, we will host a **Retro Wedding Breakfast**. You will be able to join us for a step back to a wedding of the 1960's, with a matching menu and old-time dancing. There will even be an opportunity to learn, or practice, your dancing skills the week before, with an old-time dance class. **See details - advert page 11**. Both events will be held in our iconic School of Arts Hall, the home of all good weddings in years gone by. This will be reminiscence for many and an experience not to miss, with traditional decorations and live old-time music.



Find something from the era to wear, prizes for the best dressed, in keeping with the era. Hats were an essential! Booking via **Trybooking** for both events.

Visitation to the Museum

The **Classic Citroen Owners Club** of Victoria visited the museum this past month, with cars coming from all over the state and some of these classic beauties even making the trip to Jindera.

The **Bellbridge Rotary Club** also joined us for a dinner and guided tour of the museum precinct during the month and we have had several smaller groups visit over the past weeks.



Expertise

Our museum advisor has spent some time with us during this month, as we look to plan conservation projects and museum activities into the future months. The museum advisor is provided to assist all museums in Albury and Greater Hume, providing expertise, guidance and advice on many subjects affecting, or pertinent to, museums. This position is partly funded by the state government and local councils. It gives small museums such as ours the opportunity to obtain an expert opinion or guidance, which can be so valuable in a world where everything of this nature tends to cost.



This past month we have also had a visit from a heritage engineer and a heritage builder, who have been able to provide us with some advice on maintenance works required on the main residence at the museum. The rock foundations on the northern wall have been affected by the severely dry weather, resulting in severe cracking of the walls, which it has been difficult to know how to remedy. It was very beneficial to have both an engineer and heritage builder visit to inspect the buildings and provide some sound advice. People with this degree of expertise in heritage buildings are hard to find and not easy to get to visit, so we were particularly grateful for the time given to us to undertake this inspection.

How quickly has a quarter of the year past us by! We wish you a blessed and safe Easter. Remember, we are **closed on Good Friday** but the **Tea Room will be open on Easter Sunday**.



Margie Wehner

President - 0408 409 842



Easter Egg Workshop

The Museum's first Easter Egg Workshop was held just before Easter, with a great deal of fun had by all the families that attended. Some truly lovely creations were made and many participants expressed how it was a delightful way to prepare for Easter, rather than just buy a ready-made egg or gift.



Autumn High Tea

The Museum Autumn High Tea was celebrated on a lovely Sunday afternoon on 29th March. This signature event on the Museum's calendar is held each year with little need to advertise as it is at times, booked out within weeks of ticket sales opening. It is a pleasure to provide such a nostalgic event and use the wonderful period crockery and silverware that the museum treasures and also to provide an experience that is so unique.



Discover
THE MAGIC OF
YESTERYEAR

Spread over two acres this renowned museum features multiple dwellings, exhibits and displays which showcase the early pioneering days and heritage of the region. All set within lovely gardens in the heart of Jindera.

**OPEN
SEVEN DAYS**
Tearoom open
every Sunday
from 11am



Jindera Museum - New Australia

JINDERA
• PIONEER MUSEUM •

118 Urana Street, 15kms north of Albury
www.jinderamuseum.com.au
Entry fees apply

Open Hours
Daily - 10am to 4pm
Enquiries 0408 409 842





Jindera Preschool Association Inc.
151 Adams Street, JINDERA NSW 2642
02 6026 3468
info@jinderapreschool.com.au
ABN: 63 098 596 915

Kangaroo Group – Tuesday/Thursday	Teacher - Chloe Roberts - Bach. of Ed. Early Childhood Masters of Special Education
Wombat Group – Monday/Wednesday	Teacher - Kerry Mundy - Bach. of Teaching (Early Childhood) Bach. of Educational Studies
Kookaburra Group – Friday	Teacher - Olivia Phegan - Bach of Ed. Early Childhood

**PRESCHOOL
POSITIONS AVAILABLE**

Funded positions are available for Term 2

*5yo group (Tue & Thu)

*4yo group (Mon & Wed)

*3yo group (Fri)

Be first in line - sign up to our 2027

Waiting List

jinderapreschool.com.au

WELCOME BACK AFTERNOON TEA – This month we celebrated a Jindera Preschool tradition by welcoming our previous year’s graduates. It was a lovely low-key event where families gathered at preschool, our past students got to see each other and their teachers again, and they all showed off their new-school uniforms! Thank you to all our past and present families for joining us.



COOKING AT PRESCHOOL – Our groups have been busy this month with their baking skills! Baking helps build essential skills in children such as maths (measuring & counting), fine motor skills (pouring & stirring), literacy (following a recipe) and patience (turn taking).



PAINT DANCING – Look at these little Kookaburras dance-painting! By moving their bodies while creating art, children can engage both physical and visual expression. This helps them think more freely, experiment with ideas, and develop original ways to express themselves! Such fun



Jindera COTTAGE CRAFT Group News

By Vivien Naimo

Easter Greetings from the Jindera Cottage Crafts Group.

As we enter autumn with the lovely weather, autumn colours and Easter celebrations, it is time to slow down and appreciate family, friends and community. **Nicole Campbell** is new to the craft shop, but has lived in Jindera in the past & her Mum, Pateena, has been involved in the shop for many years.

If you're looking for a lasting **gift for Easter** you can visit the Craft shop where you will find lots of great presents including Bunnies, clothes and plenty more for the young ones. There are also lots of gift ideas for the adults as well.

Come in and have a browse and **support local artists** and crafters over the Easter break.

Please note that the craft shop will be open for **extended hours from 9 am until 2pm on the Sunday 19 April** to coincide with the town **Garage Sale**.

Find us on Facebook

<https://www.facebook.com/profile.php?>

If the **Flags are Flying** on the fence - **WE ARE OPEN!**



Jindera Pool News

The Last Day of the Season was Sunday 8th March

We can all agree that this is the place to be in summer around town. The pool celebrated the last day with **Wally Wipeout** with many taking advantage of this last day of pool fun.

It has been great to see so many people utilize the pool during this season.

Thank you to all the pool volunteers, committee and lifeguards for all their hard work.

We look forward to seeing you all next summer.!





TYRES WORTH OWNING

JINDERA TYRE SERVICE

129 URANA ST, JINDERA NSW 2642

6026 3400



McMillan Electrical

Craig McMillan
All Electrical Services

📍 PO Box 477, Jindera, NSW

✉️ mcmillanelectrical44@gmail.com

☎️ 0418 966 207

NSW License 151911C
VIC License REC-31010

FUGE EARTHWORKS PTY LTD

SCRAPER DOZER LOADER EXCAVATOR

GRADER TIP TRUCK BOBCAT ROLLER



- Dam Construction or Enlargement
- Site Excavations, Drainage
- Driveways, Entrances
- Bulk & All General Earthworks

PAT FUGE 0447 770 649

375 Molkentin Road, Jindera NSW 2642

BLD Machining

CNC MACHINING FABRICATION & WELDING

Precision:

Milling, Boring & Screwcutting,
Repairs, Maintenance & Modifications
to all plant & equipment

Guaranteed fast and professional service.

Phone Bruce:

0448 790 666

6 BEGG DRIVE, JINDERA

*Fixing the old and broken, designing
and manufacturing the new!*

NA Auto

AUTOMOTIVE ELECTRICAL
DIAGNOSTICS, REPAIRS & PARTS

Neil, Kathy & Rob Anderson

94-96 Urana Street (Po Box 27) Jindera NSW 2642

Ph: 02 6026 3391 Mob: 0428 578 061

Email: sales@naauto.biz Website: www.naauto.biz

Civil Celebrant

- Judy Gray -

Weddings • Baby Namings • Funerals



Conducted in Style



MOBILE: 0418 617 385



**ST JOHN'S
LUTHERAN
SCHOOL**

154 Adams Street, Jindera 2642
Phone: (02) 6026 3220 Fax: (02) 6026 3289

Email: admin@stjls.nsw.edu.au
Web: www.stjls.nsw.edu.au

Principal: Anna-Marie Bothe

Combined Church Service

On the first of March, St John's hosted a special combined Lutheran Church service for all the Lutheran congregations between Albury and Henty. The service included the help of many volunteers across the region, including some of our Year 6 students who were part of the music team!

After the service, over 70 people took part in a workshop hosted by NSW Bishop Richard Swedes looking at the future of the Lutheran Church in the area.

We'd like to thank everyone who came to the service, especially our St John's families!



Stephanie Alexander Kitchen Garden (SAKG) Program

We are excited to share that St John's is launching the Stephanie Alexander Kitchen Garden (SAKG) Program this year. This wonderful initiative gives students the opportunity to learn practical skills in gardening, cooking, sustainability, and teamwork, all while having a lot of fun.

Throughout Term 1, students will be designing and building wicking beds, planning their garden spaces, and growing a variety of plants from seed. Each classroom will have its own garden to care for, giving every student a sense of ownership and pride in their growing space. Watch this space for updates and to watch our garden grow!



Project Based Learning (PBL)

This term Year 5/6 have been exploring a variety of scientific forces. The students tested the force of buoyancy by seeing what materials float and sink (and hypothesising why they did). We also enjoyed exploring air resistance, flying paper aeroplanes and safely dropping Lego men with make-shift parachutes.

PBL is student centred where learners gain knowledge and skills by working to investigate and respond to an authentic, engaging, and complex question, problem, or challenge and here at St John's we thrive on learning and exploring





SHOP in JINDERA

Buy Local
in Greater Hume

JINDERA COMMUNITY DIRECTORY		
Anglers Club	0427 238 281	Meals on Wheels
Friends in Action (Caritas)	0438 262 480	(02) 6036 3677
Greater Hume Children's Services	1800 954 999	Morgan Country CAR CLUB
Community Forum	0498 092 200	0428 401 991
Conway Printing.....	6026 3611	Multi Purpose Stadium Committee.....
CWA	0400 490 992	0407 357 082
Football Club.....	0427 253 587	Netball Club.....
Friends of Jindera Wet Lands.....	0423 204 263	0407 186 073
Golf Club.....	0427 431 696	OP SHOP
Jindera Community Garden.....	0400 023 290	(02) 6026 3001
Jindera Lutheran Church.....	0438 263 417	Pony Club
Jindera Pioneer Museum	6026 3622	6026 3484
Jindera Public School.....	6026 3280	Pre School.....
Jindera Post Office.....	6026 3201	6026 3468
		Recreation Reserve
		0438 263 417
		Rural Care Link (RCL)
		0475 594 073
		St Johns Lutheran School.....
		6026 3220
		St Mary MacKillop College.....
		6045 9422
		St Paul's Anglican Church.....
		6040 6457
		Swimming Pool
		6026 3900
		Tennis Club.....
		0412 314 617



131 Dight Street, Jindera 2642
Phone: (02) 6026 3280
Email: jindera-p.school@det.nsw.edu.au
Web: www.jindera-p.schools.nsw.gov.au
Principal: Emma Andrews

JINDERA PUBLIC SCHOOL TERM 1 WRAP UP

We've had a fantastic start to the first term, with a full and exciting schedule. In classrooms, students have been actively engaged in their learning, showing great enthusiasm and effort. Beyond the classroom, we've enjoyed a wide range of sporting events and SRC events. Our staff have also enjoyed attending high-quality professional development days, supporting their ongoing growth and enhancing classroom practice.

We're looking forward to finishing the term on a high note, with plenty of fun and community spirit! Our upcoming Easter Hat Parade, the P&C Easter Raffle, and a Hot Dog and Icy Pole Day promise to be wonderful events for everyone to enjoy.



SCHOOL EVENTS	
Wed 1 st April	School Cross Country 
Thurs 2 nd April	"P & C Raffle Easter Hat Parade Hot Dog & Icy Pole day Last day Term 1" 
School Dates	
Wed 22 nd April	Students return TERM 2 
Sat 25 th April	ANZAC Day 10:30am 
Mon 27 th April	ANZAC Day public holiday
Thur 30 th April	P & C Meeting 





The Good Neighbour
pet care solutions

Are you heading away and need care for your pets and property?

The Good Neighbour can help you!

Whether you're going away for 1 night or a few weeks **The Good Neighbour** has you covered.

We look after animals of all sizes and have a special interest in caring for horses.

We provide peace of mind so you have the freedom to enjoy your holiday knowing your property and pets have been taken care of and loved in their own environment just as if you're still there.



For more information head to our website:
thegoodneighbour.com.au

Servicing Border communities since 2012.

Follow us on social media



Leanne de Hennin

0411 496 062

leanne@thegoodneighbour.com.au



Phone: 02 6026 3277 Email: clinic@jinderavet.com.au

Hours: Mon-Fri 8.30am-6pm
89 Urana Street, Jindera NSW 2642

Daryl Klein B.V.Sc.(Hons) Veterinary Surgeon
Brigit Pitman B.V.Sc.(Hons) Veterinary Surgeon

With the bonus of wonderful staff!



Quality Meat & Personal Service
– Bulk Meat Specials –

Brad & Tina Taylor
Shop 7, 87 Urana Rd,
Jindera, NSW 2642 (02) 6026 1886



CAKE STALL

Sunday, 19 April 2026

@Jindera Post Office

from 8am

(raising money for the new Multi-Purpose Hall)



Donations of cakes or produce welcome during Friday or on Sunday morning at the Post Office

JINDERA PLAYGROUP

Key Dates 2026

9.30 - 11.30am @ Jindera Community Hub

Term 1 2026

Wednesday 11th February
Wednesday 1st April

Term 2 2026

Wednesday 22nd April
Wednesday 1st July

Term 3 2026

Wednesday 22nd July
Wednesday 23rd September

Term 4 2026

Wednesday 14th October
Wednesday 16th December

THE BENEFITS OF VOLUNTEERING WITH **LIFELINE ALBURY WODONGA**



- 
Meet new people
 Our local volunteers are a tight -knit group who are passionate about helping their local community - and have a great time doing it!
 - 
Connection with local community
 Volunteering is a great way to build connections with like minded people whilst contributing to achieve Lifelines vision of an Australia free from suicide.
 - 
Improve your health
 Volunteering has been shown to positively impact your mental and physical wellbeing!
 - 
Make a real difference
 Our drivers, balers, sorters and retail volunteers play a vital role in ensuring our work can continue.
 - 
Learn new skills
 When you volunteer for Lifeline, you gain valuable skills.
- TO LEARN MORE:**
 Call or text 0418 690 336
 Email us: admin.aw@lifeline.org.au
 Or drop into our Lifeline stores to have a chat!



Become a Foster Carer today

Find out more about caring

All children and young people deserve to be safe, have a sense of belonging and be supported to reach their full potential.

Ever thought about caring? Find out more by contacting our friendly team or visiting www.umfc.com.au



For further information
 P: 02 6055 8000

E: fostercareenquiries@umfc.com.au

St Paul's Anglican Ladies Knitting Group

Sit "n" Knit

Tuesday 10.00 to 11.30am

Jindera Community Hub Library

Join us to knit for a charity or bring your own knitting project

(if you can't knit we'll show you)

All Welcome



for more information phone 0400 424 437



Healthy Ageing Programs for Independence (HAPI)

HAPI MOVERS



Jindera Community Hub



Ruth Dunn - (02) 6026 3806



Friday - 10am  Gold coin

All you need is comfortable clothes, supportive shoes, a bottle of water, and your laughter.



For more info scan the QR code or visit www.activeandhealthy.nsw.gov.au to discover a group near you, or contact the Healthy Ageing team on 0409 781 326.



PESTS?

Spiders, Termites, Rodents, Carpet Beetles, Ants, Fleas Wasps or **WORSE?**

We Can Help!

- Domestic & Commercial Pest Control
- Timber Pest & Building Inspections
- Termite Treatments
- Thorough Written Reports
- Free, No-Obligation Quotes
- All work Guaranteed

www.piantospestcontrol.com.au

office@piantospestcontrol.com.au

VIC Lic No. L005632 | NSW Lic No. 5091710

Jindera, Burrumbuttock, Holbrook, Albury-Wodonga, Corowa, Rutherglen, Wangaratta, Howlong, & surrounding areas.

Pianto's Pest Control

Pianto's Pest Control

Phone: 02 6032 7137

(02) 6032 7137



GOOD CLEAN FUN

PLAY.AFL/AUSKICK

2026 Jindera Bulldogs Auskick

Jindera Football Oval

Season starts:
Friday 1st May 2026 at 6pm





JINDERA FOOTBALL NETBALL CLUB
(Jindera vs Holbrook)
Saturday 11th April

GAME DAY FAMILY FESTIVAL

Home Ground

Bring the whole family for a massive day of sport, food & fun!

FREE FAMILY ENTERTAINMENT:

- JW Equestrian - Horses : 1:00pm - 4:00pm
- Hey Ho Animal Nursery : 12:00pm - 2:00pm
- Face Painting by Chelsea : 12:00pm - 4:00pm
- Albury Wodonga Border Bouncy Castles : 12:30pp - 3:00pm
- Fairy Floss & Slushy Machine Available for purchase throughout the day
- Red Gum Wood Fired Pizzas Available for purchase From 3:00pm
- Archie McDonald 5:00pm International Motorbike Rider, Home Grown Talent

Jindera Auskick will be there



2 of Us Entertainment From 5:00pm

COMMUNITY • SPORT • FAMILY FUN

Bring your chairs, bring your friends and enjoy a fantastic day supporting local sport!

Proudly Sponsored By
Greater Hume Council



This month, children’s natural curiosity and imagination have guided our learning, with their interests in Harmony Week, space, dinosaurs, and global connections shaping rich, engaging, and meaningful experiences across the preschool.

Harmony Week

During Harmony Week, children explored belonging, identity, and diversity through conversations, music, and opportunities to try on cultural dress. Sharing stories about their families and home lives helped children feel connected to each other and strengthened their understanding of the many ways we are both similar and unique.

Space, Planets & Global Learning

Children’s fascination with space and our planet was a highlight this month. Using projected images, books, and discussions, they explored Earth, other planets, astronauts, and famous landmarks from around the world. They compared places, shared ideas, and developed early geographical awareness, observation skills, and descriptive language, all while enjoying collaborative conversations with their peers.

Creativity & Play

Imaginative play combining dinosaurs, space, and global themes encouraged problem-solving, storytelling, and teamwork. Children also explored coins, sorting, drawing, and mark-making, strengthening early numeracy and literacy skills. Creative activities such as watercolour painting and other hands-on experiences supported fine motor development and self-expression.

Child-Led Safety Project

A wonderful highlight this month was the start of a child-constructed picture book on health and safety. Children shared their ideas about how to keep themselves and others safe, contributing illustrations and stories while educators documented their voices. This project encouraged reflection, responsibility, and a strong sense of wellbeing.

Physical Development & Collaboration

Outdoor play and obstacle courses provided opportunities for children to build coordination, balance, and confidence. Group activities encouraged listening, negotiating, and collaboration, supporting children to work together and develop a strong sense of belonging in their learning community.

Little Saints continued page 27





JINDERA BUSH FIRE BRIGADE



by "Poppa Pomegranate"

The official **Bushfire Danger Period** has finished with some fantastic rain in many areas around Jindera. The season was the busiest for many years for the Southern Border Team. The **Jindera Brigade** responded to many local and regional emergency calls, as well as interstate deployments to the Victorian fires.

vigilant and monitor the weather conditions, as you may not be able to burn on the day you want to. As always, you must comply with the requirements of the NSW Rural Fires Act.

With the cooler temperatures starting, it is a timely reminder to get your heaters checked to ensure you have a safe and warm winter. Checking gas heater operations, and that the flue is clean and clear of any debris, needs to be done by a licensed plumber. Chimneys and flues on wood heater also need to be checked and cleaned before the start of winter. The Brigade responds to several heater and chimney fires each year. Getting your heaters checked before you need to use them, is the best way to protect everyone living at your property.

The Brigade continues to meet every **second Saturday** for training and to maintain our trucks and equipment. If you've been thinking about becoming involved, or are willing to join other community minded residents, you can start the process by applying for membership on line at **Join the NSW RFS - NSW Rural Fire Service**, we have many roles that you can help with, if you do not want to get on a fire truck.

JOIN US AS A VOLUNTEER

Thank-you for your ongoing support of the Brigade. Let's work together to **minimise** the chance of **heater fires** in Jindera.



Last month we asked our rural land holders to follow the permit conditions set by the NSW Rural Fire Service. The need for permits has now finished for the 2025/2026 season. However, when you are planning a burn, you are still required to **notify** the NSW Rural Service, and all your neighbours, at least **24 hours** before you burn.

By notifying us on the NSW Rural Fire Service website when you planning to burn, you can stop unnecessary callouts for the Brigade. We also ask that you remain

Little Saints Preschool - continued



Jindera CWA News

March 2026

Seven members from Jindera branch attended the Murray Group Land Cookery and Handicraft Competition at Holbrook on 19th March. We had a fairly successful day – Olivia Hanel won 1st Prize with her Chocolate Cake entry. **Jindera Branch was 2nd** in the Branch Project Competition which was a “Basket of Crocheted Fruit”. Overall Jindera was placed fourth with each branch exhibiting 10 articles. Winning entries will go to compete at the CWA STATE OF NSW CONFERENCE IN MAY. Members praised Holbrook Branch for the delightful lunch served.



After a lifetime sewing and knitting items for charities, **Virginia Morey** has decided to take a break at 90 plus years. She has been a CWA member for 74 years and with President Margaret McMaster, a member for 44 years, together they have clocked up 118 years membership. Both have been awarded Life Membership. Their original branch, Mangoplah closed and they continued the CWA journey with Jindera.

CWA will again decorate the **Jindera Cenotaph** with red poppies for Anzac Day,
WE WOULD APPRECIATE LOCAL SUPPORT FOR FOOD ITEMS FOR MORNING TEA AFTER THE 10.30AM SERVICE.

IF YOU ARE ATTENDING THE EASTER SHOW IN SYDNEY, DON'T FORGET TO VISIT THE CWA STALL FOR A CUPPA AND SCONE.

Our Meetings are held on the:

First Wednesday of Each Month in the School of Arts Hall, Jindera at 10AM
Visitors are Most Welcome.

Yours in CWA Friendship,
Bev. Blair
Publicity Officer.



PROBUS Club - April 2026 - Update!

The **March** meeting of the Henty Culcairn Probus was held on **Wednesday 11th** at Culcairn with 42 members present and 17 apologises.

The Guest speaker was Vivian Parramore who although not native to Australia, after 50 years, calls Australia 'home'. Vivian was an Irish born Londoner coming out here for 9 months and first moving to Manilla near Tamworth. Her first home was a weather board house (in fact she had *never even* seen a weather board house previously) and with no running water!! Vivian kept us entertained with her hilarious life stories.

The AGM followed the guest speaker, chaired by Russ Davies where reports were given and the new committee elected (*see below*).

The next Henty Culcairn Probus meeting will be held **Wednesday 8th April 9.30am – 10am** at **Henty Community Club**. Guests are most welcome - our speakers are always very enlightening and entertaining. Often members stay for lunch making the morning extremely social able.

We hope to see you there too

Meet the new committee for the Henty Culcairn Probus Club for 2026



President *Steve Draper*, Treasurer *Fran Fifield*, Secretary *Jen Whitlock*, Assistant Secretary *Beryl Meyer*, Probarian Editor *Kate Finlayson*, Program Organiser *Libby Draper Smith* and Welfare *Robyn Lane*

NEW HOMES | RENOVATIONS | EXTENSIONS



0401 552 942 | TRAVIS@TJBUILDING.COM.AU | LIC NO. 457875C



OPEN
Mon-Fri • 7.30am to 5pm
Sat 8am to 4pm

BARNEY'S RUBBLE

Sand & Soil • Mulch & Bark • Firewood
Pavers & Sleepers • FREE Trailer Hire
Pebbles & Rocks • Cement Products • Fertilisers
Prompt Delivery • Equipment Hire
OPERATING FOR OVER 35 YEARS

6025 1735 • 534 Urana Rd Lavington
www.barneysrubblealbury.com.au



ST PAUL'S
COLLEGE
WALLA WALLA, NSW

ENROLMENTS
OPEN FOR
YEAR 7-11
2026/2027



*Empowering students to embrace the future
with courage, confidence and creativity.*

Scan the QR code now
to receive more
information or call
02 6029 2200



Offering day & weekly boarding

www.stpaulscollege.nsw.edu.au



COUNTRY WOMEN'S ASSOCIATION
OF NEW SOUTH WALES



Fundraise to help
support various causes

Learn something new



Meet with others in
your community

Find your place at CWA

Your local branch:

JINDERA CWA

We usually meet on the first Wednesday of the Month
in the Jindera School of Arts Hall at 10am

The Jindera Branch Welcomes Visitors to our Meetings!

Search for a branch at www.cwaofnsw.org.au/branches



Jindera Village Post Office

For postal information and product specials

Bank with over 70 banks and financial institutions

Phone:
6026 3201



Saint Mary MacKillop College Albury



197 Urana Street Jindera 2642
Phone: 02 6045 9422
Website: <http://smmc.nsw.edu.au>
Email: office@smmc.nsw.edu.au

Creating in Visual Arts

We have started the year with many different projects. Students have been challenged to stretch their imaginations and use aspects of the world as a source for ideas.

Year 7 have been introduced to Visual Arts through the elements of art and have begun developing their understanding of facial features in the lead up to creating their portraits of an influential person.



Year 8 is exploring landscape and perspectives. They loved creating 3D landscapes based on a book or particular place. They are currently practicing one point and two-point perspective drawing.



Year 9 and 10 students have been exploring art making inside and outside the classroom. They have been learning about installation artworks - where the art creates an experience in a space for the viewer. They used different natural materials and techniques to create ephemeral artworks. They are currently painting their own idea of an installation artwork.

197 Urana Street Jindera 2642
Phone: 02 6045 9422
Website: <http://smmc.nsw.edu.au>
Email: office@smmc.nsw.edu.au



Year 12 CSU Chemistry Day

Our Year 12 Chemistry class headed out on a Chemistry Day at CSU Wagga recently where they took part in a range of different experiments, ranging from a *Dry Ice Rainbow Solution* experiment to setting off an *Elephant's toothpaste* reaction.

They started the day with pH testing of different solutions and then moved onto completing a titration experiment to determine an unknown concentration of a solution as well as other interesting investigations such as trying out an Atomic Absorption Spectroscopy machine, which uses a highly sensitive analytical technique to detect the concentration of specific metal ions through analysing light absorption.



St Patricks Day

SMMC recently held its annual St Patrick's Day celebrations. Each Primary class did a wonderful job of performing a piece at the college St Patrick's Day Parade, which also included some Irish dancing and traditional Irish fiddle playing. Our team of student caterers did a great job of serving 'green' salad rolls and 'green' cordial at lunchtime and selling cupcakes at recess.



Jindera COMMUNITY GARDENS

We are a social group creating a garden for EVERYONE to enjoy. Check latest news on our [Facebook](#) page.
You can Phone or Message Lorraine (President) **Ph: 0419 984 887**

Jindera Community Garden Update It's Blooming Beautiful!

Hi everyone,
What a difference a little rain can make!
Our community garden is absolutely bursting with colour as vibrant flowers begin to bloom and fresh seedlings push their way up through the soil. It's been so exciting to finally see everything coming to life after all the hard work that's gone in.



From bright pops of pinks and purples to cheerful yellows and reds, the garden is quickly transforming into a welcoming and colourful space for everyone in our community to enjoy. We truly couldn't do this without our amazing volunteers. Your time, effort, and dedication are what make this garden such a special place.



Whether you've been planting, watering, weeding, or supporting in any way - *thank you* for helping create something so beautiful for everyone. And the best part? This is just the beginning!



Just a quick reminder that our next community **meeting** will be held on **April 12th at 3:00pm**. We'd love to see as many of you there as possible as we continue to grow and plan together.

EVERYONE IS ALWAYS WELCOME

Thanks team you do amazing x



Saturday 2nd May 8.30am is the Jindera Community Gardens *working bee* - *love to see as many hands as possible*.



Committed to our region.



**Justin
CLANCY MP**
MEMBER FOR ALBURY

Authorised by Justin Clancy. Funded using Parliamentary Entitlements. 02 6021 3042 | justinclancy.com.au



JINDERA HAIR HEALTH & BEAUTY

TEL: 0412 62 62 50

91 Urana Street, Jindera NSW 2642

EQUIP

OCCUPATIONAL THERAPY

Alison Viedt

0427 263 398

alison@equipoccupationaltherapy.com

MICK'S TREE HEIGHT REDUCTION & SHAPING SERVICES

SPECIALISING IN:

TREES - felling/lopping
/pruning & removal

**PRUNING &
STUMP GRINDING**
- hedges/bushes/shrubs
/roses & palm trees
(chipping available)

OTHER SERVICES -
gutter cleaning/
rubbish removal

**Special
Discounts
for
Pensioner
Services**

MICK: 0427 316 497

WALLA WALLA COMMUNITY MEN'S SHED INC

**TEA & COFFEE MORNINGS @
WALLA WALLA LIONS COTTAGE
45 COMMERCIAL STREET
MONDAY @ 10.00am EACH WEEK**



Gold Coin Donation

CONTACT

TED ACKERLEY MOBILE:0410594044

Burrumbuttock Lutheran Parish

2026 Easter Worship Services

You are warmly invited to join us
to celebrate Easter

Maundy Thursday 2 April

Bethlehem Jindera 6pm

Good Friday 3 April

Bethlehem Jindera 9am
St Peter's Gerogery 9am
Trinity Bethel 11am

Easter Sunday 5 April

Dawn Service @ St Peters, Gerogery 7am
Glenellen Road, Gerogery
Cooked breakfast following the service

Bethlehem Jindera 9am
Easter egg hunt after the service

Burrumbuttock Lutheran Parish

For more information please contact us on
6026 1876 or visit our website
www.burrumbuttocklutheranparish.org



JINDERA FOOTBALL CLUB



Over the past month, Jindera Football Club has been busy preparing for the 2026 season ahead. Our senior teams have taken to the field in practice matches against North Wagga and Finley, while our junior sides have hosted local clubs Wodonga Saints and St Pats in a series of preseason games.



The club also held a working bee to ensure the grounds and facilities are in top condition for the season ahead. A **big thank you** goes out to all players and volunteers who generously gave their time to help out!

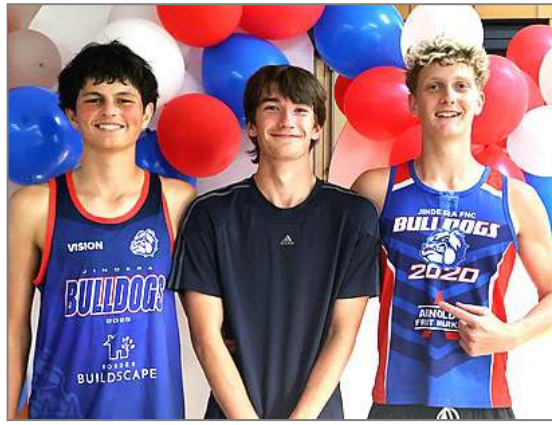


To round out the month, the club hosted its Season Launch and Jersey Presentation on Thursday, 26th March. It was a fantastic evening shared by players, families, and sponsors. Each player was presented with their jersey, and team captains were officially announced. It was a great way to bring the club together and kick off the season.



Looking ahead, Round 1 V Holbrook kicks off on **Saturday, 11th April** alongside the club's **Family Fun Day**. The day is set to be full of entertainment for the whole community—so be sure to mark it in your calendar, come down, enjoy some great food, and support the Doggies in their first home game of the season!







Do you know a local with an interesting story?



Jindera News want to hear from you

Email: jinderanews@ruralcarelink.org.au



JINDERA AUSKICK

Jindera Auskick

**TICKETS:
\$10 FOR 1
\$20 FOR 3**

WIN A BOBCAT ZT2000 42" ZERO TURN MOWER!!

RRP \$10,670



RAFFLE DRAWN:

Jindera Football Club

110 Dight Street, Jindera

31st May 2026

Terms & conditions apply - see tickets for details



M.E.G.A.S
Music Store

Megas Music Store
161 High Street Wodonga
02 6056 1044

LIKE US ON
facebook

MusicAccessories.com.au
www.MegasMusic.com.au



Lester & Son
FUNERAL DIRECTORS

A tradition of personal, professional care since 1907



Albury	Wodonga
359 Wantigong St, North Albury	49 Thomas Mitchell Drive, Wodonga
02 6040 5066	02 6056 1700

www.lesterandson.com.au

All Hours | All Areas | Pre-paid Funerals



TerryWhite Chemmart.
Jindera TerryWhite Chemmart Pharmacy

Shop 4&5, 82 Urana Street, Jindera, NSW 2642

OPEN
Monday-Friday: 9.00am to 5.30pm
Saturday: 9.00am to 12 noon

-- OFFERING --

- ◆ Health Risk Screening Services
- ◆ National Diabetes Services Scheme
- ◆ Webstar packing
- ◆ Spotcheck (Skin Cancer Screening Programme)
- ◆ Wide range of vitamins
- ◆ MedsCheck
- ◆ Free Blood Pressure Testing
- ◆ Baby Products
- ◆ Home Health Care Aids
- ◆ Giftware
- ◆ Natio Ski Care range
- ◆ Chemmarts Reward Programme

Phone (02) 6026 3271
Fax: (02) 6026 3935
Email: Jindera@chemmartpharmacy.com.au



CONWAY
PRINTING

"FOR ALL YOUR PRINTING REQUIREMENTS"

- Business Cards • Letterheads • Books • Raffle Tickets
- Complete in-house design service • All business stationery
- Invoice Books • Stickers • Brochures • Leaflets

(02) 6026 3611

Stitch and Chat Craft Group

This group meets on the first Wednesday afternoon of each month at **2.00pm** at the Jindera Hub.

All welcome, just bring whatever you are working on & come along for a chat and cuppa. We usually finish around 3.30pm

Judy Gray
0418 617 385
for further information.





Jindera Tennis Club

By Warwick Horsfall - President

The Jindera Tennis Club concluded its **2026/26 summer Competition Season** last Saturday at the courts with a social hit, BBQ and award presentations. The club had a successful season with five of the six teams making finals; four of which went on to play in the Grand Final for their respective sections within the Hume Country Tennis Association. Two teams, Sections 3B and 6, claimed the ultimate prize. Here's how the teams landed.



Section 1 finished third at the end of the season and then won two knockout finals to make the grand final. A great effort. Best for the ladies over the season was Haidee Saunders and for the men Simon Kilo. Thanks to Jo Williams for managing this team.

Section 3A finished a disappointing sixth out of seven teams after being in finals contention for most of the season. A loss in the last game led to missing fourth spot by one point. The President is still looking for a scapegoat as to how this happened. Best for the ladies over the season was Thea Saunders who reminded me this was her third time in a row. Sean Lethlean was the best man.

Section 3B completed the season in second place and won the first final by one game against top team Holbrook to go straight through to the grand final. Holbrook couldn't recover in the preliminary final and Burrumbuttock were Jindera's opponents in the big dance. In a tight grand final, the Jindera prevailed and redeemed themselves from two seasons ago when they did not win a game. Tara Campbell was the team's best lady for the season and Aaron Jennings the best man. Aaron dedicated the win to Jeff Donney who had sacrificed himself to allow the team to rebuild. Thanks to Steve Campbell for managing this team.

Both **Section 4** teams made finals, the Jaguars finished third just behind the Juggernauts at the end of the season. The Jaguars had a convincing win in the first final over Walbundrie but couldn't get up against Burrumbuttock the following week who were on the rebound having been beaten by the Juggernauts the week before. An all Jindera grand final beckoned but was not to be for the Jaguars. Best for the ladies over the season for the Jaguars was Mel Delahunty, which was a great effort given this was her first season of tennis. For the men it was Andrew Davis. The Juggernauts completed the season in second place having only lost just two matches. They defeated the top team Burrumbuttock (who were undefeated) in the first final to go directly to the grand final but couldn't repeat the dose on the big day in a closely fought contest. Overall best for the season was Vanessa Hancock with hubby Leon taking out the men's title. Thanks to Gina Barnett for managing the 'Jags' and Leon Hancock for managing the 'Jugs' this season.

Section 6, the reigning premiers, found themselves undefeated on top of the ladder at the end of the season and pretty much proceeded through to winning the grand final over Henty without too much trouble. This will be the end of an era for this team with the stronger players progressing to higher sections next season. The best girl for the season was again Memphis Hotchkins with Tyler Williams taking out the boys title. Thanks to Eddie Saunders for wrangling this team.

At the end of the season the club presents a perpetual trophy to the best overall senior lady and man, and junior girl and boy (under 18 years). This season the title of Senior Club Champion was bestowed upon Mel Delhunty and Leon Hancock. Memphis Hotchkins and Tyler Williams become the Junior Club Champions for the 2025/26 season; Memphis for the third time in succession.

I would also like to take this opportunity to extend an **invitation** to everybody in the **Jindera community** to consider joining their **local tennis club** going forward. By becoming a member you can participate in the summer competition in a team that suits your level of ability or just play socially in the Wednesday evening competition or just use the courts via a simple booking system whenever it suits you. Jindera is fortunate to have such a quality sports facility and there are more than enough courts for everybody to participate. The courts are available for use 365 days a year.

More Tennis Club page 30



**JINDERA EASTER
TENNIS HOLIDAY CAMP**

DATES, TIMES & COST:
 Mon 13/04 & Tues 14/04
 9am-12pm each day
 \$30 per day

JINDERA TENNIS CLUB

JOIN THE FUN!
 Contact Pat on
 0412512799

**GOOD GAME
TENNIS**

JTE COLLECTABLES

LOOKING TO BUY
 Garagenalia – Antiques
 Collectable Items

NE Victoria & Southern Riverina

CASH PAID

Call Michael 0456 721 581

Jindera Tennis Club - continued

Unfortunately due to a player shortage the club was unable to field a team in Section 2 of the HCTA competition this season, which created an imbalance when trying to place players in teams each week. It is essential that a Section 2 team from Jindera is reinstated for the 2026/27 season. If you or anybody you know is even a little bit **interested in tennis** at whatever level, please contact the President **Warwick Horsfall** on **0412 314 617** to find out more about the club and what it can offer. This also applies to parents of children for which there is financial assistance offered by the NSW Government to incentivise participation.

This year the club was fortunate enough to receive some funding through the **Glenellen Solar Farm Community Grant Program** to assist in providing remote activation for the lights at the courts. This means that when you book a court at night either as a member or paying non-member via the club's website, the lights will be remotely activated with the booking. Without this system the club has been unable to provide casual night tennis even though there is anecdotal evidence of demand for such. Hopefully this system will be up and running before the beginning of next season so watch this space.

Finally, a reminder that the club's **Annual General Meeting** will be conducted in **April** to which everyone is invited to attend. I promise you won't be press-ganged into a position if you attend! Keep your eye on the club's socials for details.



With all the lovely rain, combined with the continuous work from the grounds crew, led by Peter Penny and Graeme Moore, the Jindera Country Golf Course is looking in excellent condition. Perfect for the seasons Opening Day events, consisting of a men's and a mixed 18-hole Ambrose day on Sunday 8th March.

We had a total of 46 players chasing the prizes and taking on the course, blessed with perfect weather. Lunch and snacks were served by social committee head; Heather Chaston and workers and enjoyed by all.

All weekly competition programs have begun for the year and we encourage all members and any guests to come along and enjoy some rounds of both social and competitive golf.

SCORES Summary - MARCH 2026

SUNDAY COMPETITION

SUN 1/03/2026 Monthly Medal - Stroke – 12 Players

Postn	Player	DLY Hcap	Gross	Nett	18-Hole Result	9-Hole Result FRONT
1	Aaron JENNINGS	22	90	68	W, \$30	
2	Russell GUEHO	21	91	70	R/U, \$10	
3	Cam BURT	16	89	73	B	
4	Craig MCMILLAN	8	82	74	B	
5	Greg PRESTON	16	92	76	B	
	David GRAY	22				W, -3, \$20
	Peter YENSCH	16				R/U, -2, 2B

SUN 8/03/2026 Competition Opening Day –2 Ball Ambrose Mens - 36 Players

Postn	Player	DLY Hcap	Nett	Result
1	Robin WELDON & Simon COSSOR	21, 9	64.5	W, \$30 ea
2	Greg PRESTON a&Thomas PEFFER	15, 22	64.75	R/U, \$10 ea
3	Ian PERTZEL & Kenneth PRIMMER	25, 16	65.75	B
4	Garry SPURR & Brad SPURR	20, 33	66.75	B
5	Andrew WILLIAMS & Aaron JENNINGS	6, 22	67	B
6	Wade MCPHERSON & Garry SAMIOS	32, 12	67	B
7	Bruce HILL & John WIESNER	22, 29	67.25	B

Mixed – 10 Players

Postn	Player	DLY Hcap	Nett	Result
1	Russell GUEHO & Kate WOOKEY	21, 31	65	W, \$20 ea
2	Craig MCMILLAN & Roslyn MCMILLAN	8, 31	66.25	B
3	David GRAY and Judy GRAY	22, 47	70.75	
4	Sharon BRAND and Neville BRAND	47, 21	71	
5	Lucy PHELPS and James PHELPS	38, 27	71.75	

SUN 15/03/2026 Stableford – 15 Players

Postn	Player	DLY Hcap	Gross	Nett	18 Hole Result	9 Hole Result FRONT
1	Russell GUEHO	21	84	43	W, \$30	
2	Jack KIMPTON	14	78	35	R/U, \$10	
3	Donald SINGLETON	32	82	33	B	R/U, 18, 2B
4	Craig MCMILLAN	8	82	32	B	
5	Cam BURT	16	75	32	B	
6	Marita CHRISTENSEN	40	110	31	B	
	Kye LEISCKE	34	76	31		W(cb), 18, \$20

We play **Weekly competitions:**

- **Sunday** Main weekly comp **18 holes** tee off 8:30am
- **Monday** Ladies social comp **9 or 18 holes** tee off 8:30am
- **Wednesday** VETS age 55+ comp **9 holes** tee off 8.30am
- **Friday** Chook Run **9 hole** comp., tee off currently between 3:30-5.15pm although, changing on 10th April from 3:00-3:30pm only to cater for daylight savings.

Memberships are due by 31st March, \$150 for adults and \$35 for under 18s. Pay at the clubhouse or by direct debit to: Jindera Golf Club **BSB 640 000, Acct no. 111 043 461** with your name as reference.

Social golfers can pay at the clubhouse \$15-\$17 per round, cash or card.

We have golf carts to hire @ \$30 and clubs for \$5 – with pre-arrangement.

The golf course can be hired out to groups for the day and many school and regional cross-country students can often be seen running around our lovely course for their events. We have just hosted St Mary McKillop College and Tabletop PS students. We have also recently hosted St Paul's College Walla for a golfing sport program.

We can be contacted on admin@jinderagolfclub.com

Hope to see you out on the course.

Follow us on Facebook or our website at



www.jinderagolfclub.com

SUN 22/03/2026 Stableford – 18 Players

Postn	Player	DLY Hcap	Gross	Nett	18 Hole Result	9 Hole Result BACK
1	Cam BURT	16	75	+1	W, \$30	
2	David GRAY	23	95	-1	R/U, \$10	R/U, +2, 2B
3	James PHELPS	26	74	-1	B	
4	Jack KIMPTON	14	68	-2	B	
5	Jeff DONNEY	22	68	-2	B	
6	Simon COSSOR	9	82	-3	B	W, +3, \$20
7	Stuart MILLAR	21	95	-3	B	

CHOOK RUN – Friday afternoon – 9 Holes STABLEFORD

CHOOK RUN 27/02/2026 - Stableford - 29 Players

Postn	Player	Dly Hcap	Nett	Result FRONT
1	Aaron JENNINGS	11	20	W \$40
2	James PHELPS	13	20	R/U \$20
3	Brodie ARMSTRONG	17	20	B
4	Zach LOWEN	10	19	B
5	Cam BURT	8	19	B
6	Ky LIESCHKE	17	18	B
7	Trevor FREEMAN	8	18	B
8	Brendan BURT	10	17	B
9	David PAECH	11	17	B
10	Greg PRESTON	8	17	B
11	Craig MCMILLAN	4	16	B

CHOOK RUN 6/03/2026 - Stableford - 27 Players

Postn	Player	Dly Hcap	Nett	Result BACK
1	Brandon MULLER	16	22	W \$40
2	Greg PRESTON	9	20	R/U \$20
3	Brodie ARMSTRONG	18	19	B
4	Cam BURT	9	18	B
5	James PHELPS	14	17	B
6	Bruce HILL	12	16	B
7	Robin WELDON	11	16	B
8	Neville BRAND	11	16	B
9	Russell GUEHO	11	16	B
10	Trevor FREEMAN	9	16	B



All the challengers for Opening Day 2026



President – James Phelps presenting to mixed winners Russell Gueho and Kate Wookey



Ian Pertz and Ken Primmer took out 3rd place



Great to see all the girls out enjoying the course



Father and son team Garry and Brad Spurr



Team McMillan (Ladies captain Ros and club President Mickus) presented by club captain James Phelps



Winners are grinners: Andrew Williams and Aaron Jennings

CHOOK RUN 13/03/2026 - Stableford - 18 Players

Postn	Player	Dly Hcap	Nett	Result FRONT
1	Lisa GRAY	24	24	W \$30
2	Craig MCMILLAN	4	20	R/U \$10
3	Peter YENSCH	8	20	B
4	Daryl KLEIN	11	18	B
5	Tony CORRIN	7	18	B
6	Peter PENNY	8	17	B
7	Trevor FREEMAN	8	16	B

VETS 11/03/2026 Stableford - 19 Players

Postn	Player	Dly Hcap	Nett	Result BACK
1	John WIESNER	20	19	W
2	Dave CASTLES	14	18	RU
3	Tom McGRATH	20	17	
4	Daryl RIXON	18	16	
5	Frank SHANNON	20	16	

CHOOK RUN 20/03/2026 - Stableford - 21 Players

Postn	Player	Dly Hcap	Nett	Result BACK
1	Andrew SCHMIDT	16	22	W \$40
2	Jeff DONNEY	12	21	R/U \$20
3	James PHELPS	14	21	B
4	Brandon MULLER	15	19	B
5	Ian PERTZEL	13	19	B
6	Bruce HILL	12	19	B
7	Aaron JENNINGS	12	18	B
8	Kevin WALSH	14	17	B

VETS 18/03/2026 - Stableford - 23 Players

Postn	Player	Dly Hcap	Nett	Result FRONT
1	Frank SHANNON	20	20	W
2	Stuart MILLAR	18	18	RU
3	Stan DUFFIELD	26	16	
4	Dave CASTLES	14	15	
5	Dave BRIGGS	20	15	

VETS COMPETITION – Wednesday morning – 9 Holes.

VETS 25/02/2026 Stableford - 18 Players

Postn	Player	Dly Hcap	Nett	Result BACK
1	John WIESNER	22	18	W
2	Ian PERTZEL	24	17	RU
3	Dave CASTLES	14	16	
4	Bruce HILL	18	15	
5	Nev BRAND	18	15	

VETS 4/03/2026 Stableford - 21 Players

Postn	Player	Dly Hcap	Nett	Result FRONT
1	Frank SHANNON	20	19	W
2	Daryl RIXON	18	17	RU
3	John WIESNER	22	16	
4	Nev BRAND	18	15	
5	Frank CARMODY	22	15	

LADIES - Monday Morning – 9 Holes

LADIES 9/03/2026 Birdie Dash - 9 Hole Stableford

Postn	Player	Dly Hcap	Nett	Result FRONT
1	Joan JAMISON	24	17	W
2	Leanne QUINN	30	10	RU
3	Catherine CRAZE	30	9	

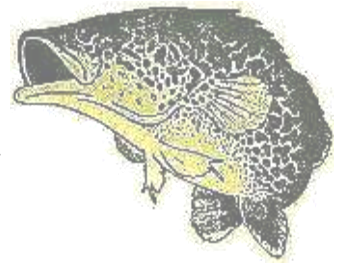
18 Hole Competition

Postn	Player	Dly Hcap	Gross	Nett	Result
1	Marita CHRISTENSEN	40	112	37	W
2	Rawinia SMITHENBECKER	14	84	31	RU
3	Helene WALKER	54	127	26	
4	Heather CHASTON	36	118	26	

LADIES 16/03/2026 - Monthly Medal 18-hole stroke

Postn	Player	Dly Hcap	Gross	Nett	Result
1	Rawinia SMITHENBECKER	15	89	74	W
2	Marita CHRISTENSEN	40	120	80	RU
3	Helene WALKER	54	146	92	

JINDERA ANGLERS CLUB INC.



March comp has been and gone with a few different species being caught and a few donuts collected.

Jacob Guy biggest fish 74cm Murray Cod
Jacob with biggest bag (231cm) 2 cod, 2 reddie and 1 yellow belly. Also weighing in was Lynchy and Laz.

Donut winners included Nat, Kerrie, Mark & Saffy

Big Thanks to all members who continue to support and participate in our family friendly club.

Jindera Community Garage Sale is **Sunday 19th of April**, our club will again be **servicing hot food and drinks**. A roster system will be in place with 2 hour stints, If members could reach out to Mark Lynch on 0409 609 553 and let him know your availability. More hands make light work !!



Wood Raffle

This year the Jindera Anglers plan to have a Wood Raffle or take the \$200 cash !! We won't be at the swap meet this year but be sure not to miss us at the **IGA selling Raffle Tickets** closer to the cooler months.



Next comp will be an open comp on **10th, 11th & 12th of April** and please put in your diaries our **Annual closed Upper Murray Comp in May the 22nd, 23rd and 24th**, members are able to fish between Jingellic and Tintalra with weigh in at 11am at the Walwa Boat Ramp.

As always we are on the hunt for **new members** so don't be shy come down to the club on a **Friday evening** or



contact the President **Kerrie Lynch** on **0438 930 285**, message us on [Facebook](#), or email - jinderanglers@hotmail.com

We would love to see you as a member!

*Get Hooked
It's Fun to Fish!*

Tight Lines!





Table Top Mountain Charity Walk

9:00am Sunday 19th April 2026

A Memorial Cairn was erected in 2024 to commemorate a visit by Hamilton Hume and William Hovell in November 1824

This year walkers can add a small commemorative stone to the Memorial Cairn upon arrival the top of Table Top Mountain

Directions: About 40 minute drive from Albury. Turn right on the Olympic Highway at the Peregrines Reception Centre sign. NO DOGS.
<https://www.peregrines.com.au/location>

Participation Entry Charges

\$50 per car, \$100 per mini-bus, \$200 per coach

Walkers will receive a Sunshine Ribbon and a Certificate of Achievement

BBQ / Sausage Sizzle outside Reception Centre after the Walk

All funds raised will benefit Albury Wodonga Regional Cancer Trust



Charity Walk Supports Local Cancer Services

After the success of last years charity walk up Table Top Mountain, many people asked when it would be done again.

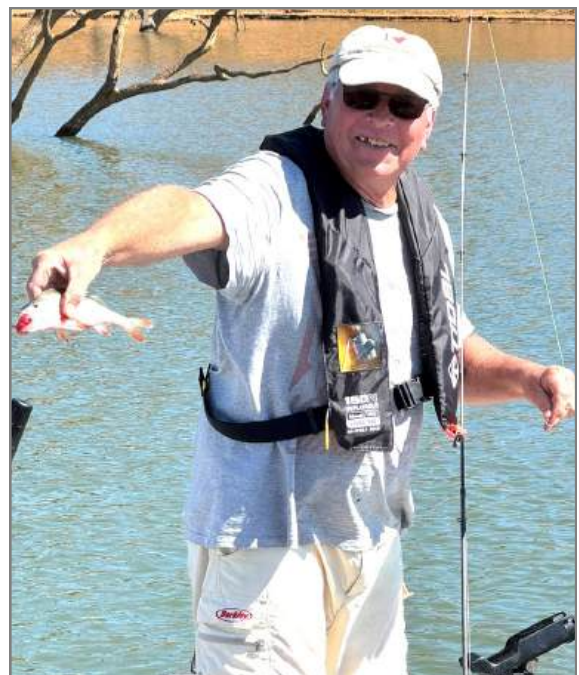
The emphasis on this year's walk is to support local cancer services and is being run by **North Albury Rotary Club** and **The Sunshine Trust**. Small stones will be provided for walkers to write the name of a loved one, who has been impacted by cancer and place it in the **Hume and Hovell cairn** on the mountain summit.



A barbeque and coffee van will be available. Also, walkers will receive a certificate of achievement at the completion of the walk.



Jindera Anglers Club - continued



RECEIVE

THE JINDERERA NEWS

BY EMAIL

WOULD YOU LIKE TO RECEIVE A DIGITAL COPY OF JINDERERA NEWS?
FOR A FREE MONTHLY COLOUR COPY JUST SEND A REQUEST TO
jinderanews@ruralcarelink.org.au

**NOW
ONLINE**

Access the Current Edition of
The Jindera News
on the Rural Care Link website @
www.ruralcarelink.org.au/the-jindera-news/

The Jindera News publishes and distributes 600 printed copies and
emails digital copies to approx. 270 subscribers each month (except January).
.NOTE: The newspaper is emailed in PDF format and can vary in size from 8 to 12Mb

Jindera



Trading Hours

Mon – Fri 7:30am-7:00pm

Sat & Sun 8:00am-7:00pm

Find us on  to see our
great specials, new lines
recipes and loads more!